

Compact Wall Basin

Vitreous China Wall Basin

Basin Size: 560mm x 230mm (nominal).

Bowl capacity: 2 litres to overflow.

A small hand basin designed for toilet areas where space is restricted. The minimal 230mm projection-from-wall dimension is of particular value where a larger basin cannot be installed.

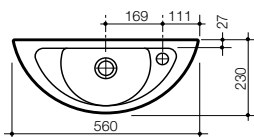
Tap Holes: The basin is available in one taphole (right hand) and two taphole options.

Overflow: Overflow available only. Maximum tap flow rate of 15 litres/minute.

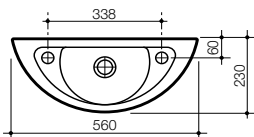
Fixing: D.200 Basin Fixing Kit (supplied) – bolts directly to finished wall.

Installation: Refer to *Important Information for Plumbers* section.

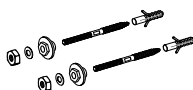
Colours: White only.



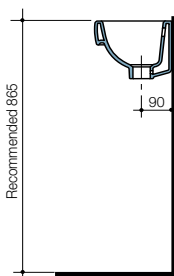
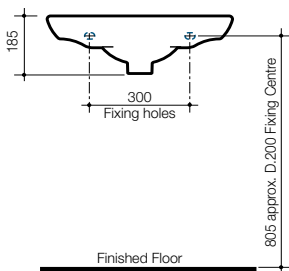
One tap hole



Two tap holes



D.200 Basin Fixing Kit



Supplied with chrome flush fitting waste and white plug.