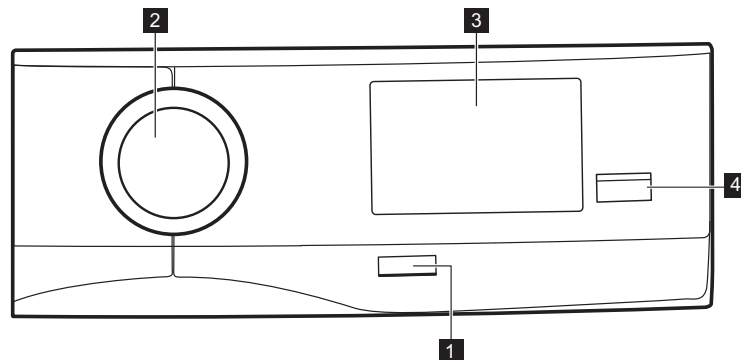


QUICK USER'S GUIDE

EN

- ⚠ Before you activate the appliance read the "Safety Information" chapter in the user manual.
- ⚠ Before you activate the appliance remove all the transit bolts.
- ℹ For more information please always refer to the user manual.



- 1 On/Off button
- 2 Programme dial

- 3 Touch screen
- 4 Start/Pause button

THE ON/OFF BUTTON

The On/Off function automatically deactivates the appliance to stop energy consumption:

- Before touching Start/Pause button, if not using the appliance for about five minutes. All settings are cancelled. Press On/Off button to activate it again.
- After five minutes from the end of the programme. Once activated the appliance again, the display shows the cycle end.

THE DETERGENT DISPENSER AND SALT COMPARTMENT



Clean the detergent dispenser and the salt compartment regularly. Before cleaning, make sure that all compartments are empty.



Compartment for salt.



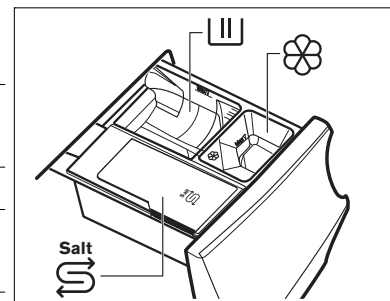
To keep the water softening function active, pour salt in this compartment when necessary.



Compartment for wash phase.

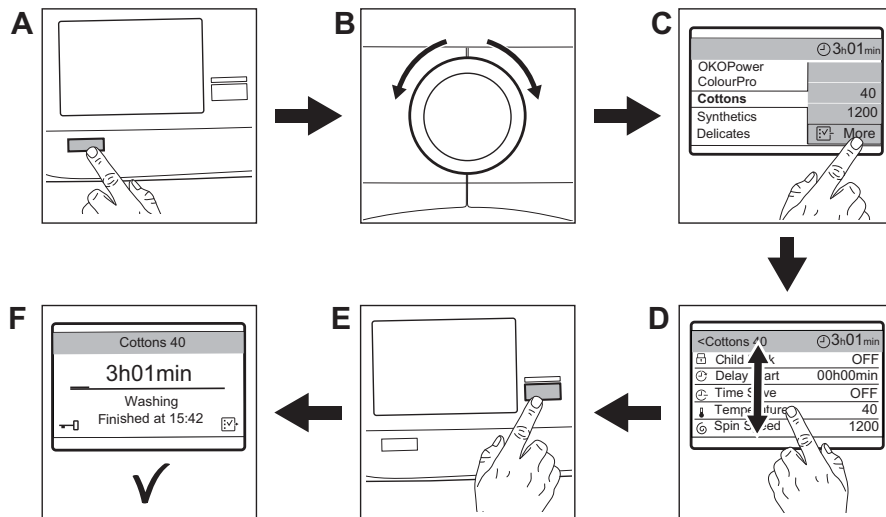


Compartment for liquid additives.



AEG

DAILY USE



1. Make sure the water tap is open and the mains plug is connected to the mains socket.
2. Push the On/Off button to turn on the appliance (A).
3. Turn the programme dial to set the desired programme (B).
4. Tap on More to see the option list available with the selected programme (C).
5. Scroll the option list up or down to browse it. Tap on the option bar to select it (D).
6. Put the laundry in the drum, one item at a time. Close the door and make sure that no laundry stays between the seal and the door.
7. Pour the detergent in the proper detergent dispenser compartment.
8. Touch the Start/Pause button (E).
9. The programme starts (F).

INFORMATION ABOUT WASHING MACHINE


THE PROSENSE LAOD DETECTION

After the programme start and before the water filling, the appliance starts the laundry load detection to calculate the real programme duration. The display shows the message Adjusting programme to current load.

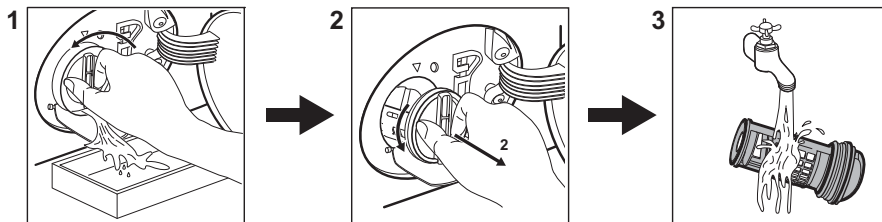
If you put in the drum more laundry than the maximum load, the display tells that the suggested load has been exceeded. Pause the appliance and remove a few garments.

If the laundry amount is not reduced, the appliance starts the washing programme immediately despite the overload (for more information see the user manual).

CARE AND CLEANING

 Clean the drain pump filter regularly. Refer to “Care and Cleaning” chapter in the user manual.

Disconnect the appliance before starting the cleaning.



ALARM MESSAGES

The display can show alarm messages (refer to the “Troubleshooting” chapter in the user manual):

- **Check that the water inlet tap is open:** The appliance does not fill water properly.
- **Check that the drain filter is not clogged:** The appliance does not drain the water.
- **Check that the door is properly closed:** The appliance door is open or not closed correctly.
- **Programme will continue when electricity supply is stable:** The mains supply is unstable. Wait until the mains supply is stable.
- **A water leak has been detected:** The anti-flood device is on. Disconnect the appliance and close the water tap. Contact the Authorised service centre.
- **Cleaning cycle recommended - Run the Machine Clean programme.** If the cleaning programme is postponed, the message keeps on popping up during next uses until it is run.

PROGRAMMES

| Programme Temperature range | Programme description | Programme Temperature range | Programme description |
|-------------------------------------|--|-----------------------------------|---|
| OKOPower 60 °C - 30 °C | Cotton and synthetic items. This programme ensures a good washing performance in a short time. | 20min 3kg 40 °C - 30 °C | Cotton and synthetic items lightly soiled or once worn. |
| ColourPro 30 °C - Cold | Coloured cottons and synthetics. Special programme for colour protection at low temperature. | Outdoor 40 °C - Cold | Modern outdoor sporting garments. |
| Cottons 95 °C - Cold | White cotton and coloured cotton. | Jeans 60 °C - Cold | Denim clothing and jersey items. |
| Cottons Eco 60 °C - 40 °C | White cotton and coloured cotton. Standard programmes for the Energy Label consumption values. | Anti-Allergy 60 °C | White cotton items. This programme helps to remove germs and bacteria. |
| Synthetics 60 °C - Cold | Synthetic items or mixed fabric items. | Rinse | All fabrics, except woollens and very delicate fabrics. Programme for rinsing and spinning. |
| Delicates 40 °C - Cold | Delicate fabrics such as acrylics, viscose, polyester items. | Drain | All fabrics, except woollens and very delicate fabrics. Programme for draining the water. |
| Wool/Silk 40 °C - Cold | Machine washable wool, hand washable wool and delicate. | Spin | All fabrics, except woollens and very delicate fabrics. Programme for spinning. |
| Steam | Steam programme for cotton and synthetic items. | Machine Clean 60 °C | Maintenance cycle for drum cleaning. |