

ARCHITECTURAL **GRATES + DRAINS**



100TiGBL20

Tile Insert Drain

Downloaded 12/02/2025 (please check for updates)

Stormtech is the only linear drainage system available with full
Greentag and Watermark certification across our complete product range.

Telephone 1300 653 403 | **Web** stormtech.com.au



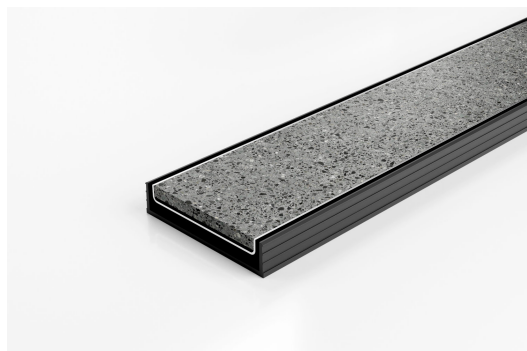


ARCHITECTURAL
GRATES + DRAINS



100TiGBL20

Tile Insert Drain



The 100TiG20 is a modular drainage system with a stainless steel tile insert and a Black uPVC channel and fittings.

The 100TiG20 is a Tile Insert Drain manufactured from 1.5mm thick 316 marine grade stainless steel.

Suitable for tiles up to 10mm thick.

Black uPVC channel only suitable for Internal use only

Code 100TiGBL20

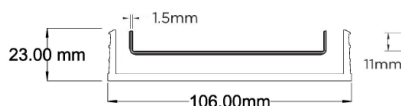
Range 100

Grate Style Ti

Category Modular Kits

Channel Material uPVC

Steel Grade 316

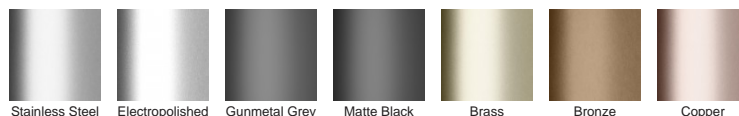


Grates longer than 1500mm supplied in sections. Tile Inserts longer than 1200mm supplied in sections. Channels over 3000mm supplied in sections with joiner. +/-2mm tolerance on dimensions.

SPECIFICATIONS + DIMENSIONS

Channel Width	106mm					
Channel Depth	23mm					
Length(s)	1000mm	1200mm	1500mm	1800mm	2000mm	2400mm
	2700mm	3000mm				
Outlet Size	DN80, DN100					

STORMTECH COLOUR FINISHES



Electroplate finishes subject to natural variation with time and local environment. Factors such as pools/surf beaches may require electropolishing. Contact us for suitability.

PRODUCT APPLICATIONS

Bathroom Drainage
Aged / Health Care Drainage
Hospitality Drainage
Shower Drainage
Multi-Residential Drainage
Special Needs Drainage

Wet Area Drainage

Copyright © Stormtech Pty Ltd. Patent 733361. Drawings not to scale, please use dimensions shown.
Downloaded 12/02/2025 (please check for updates)



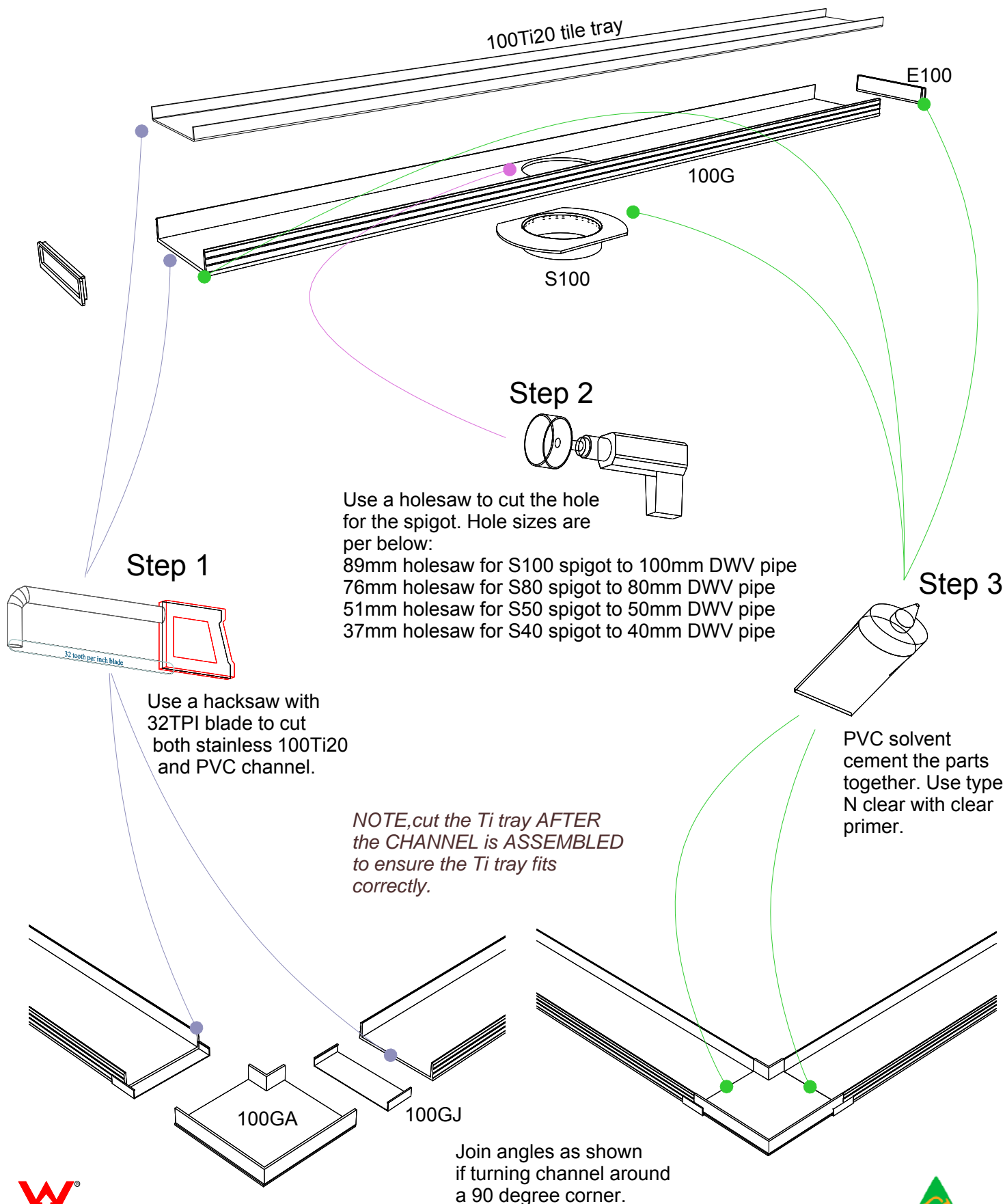
Visit **stormtech.com.au**
for tools + inspiration.

Phone **1300 653 403**

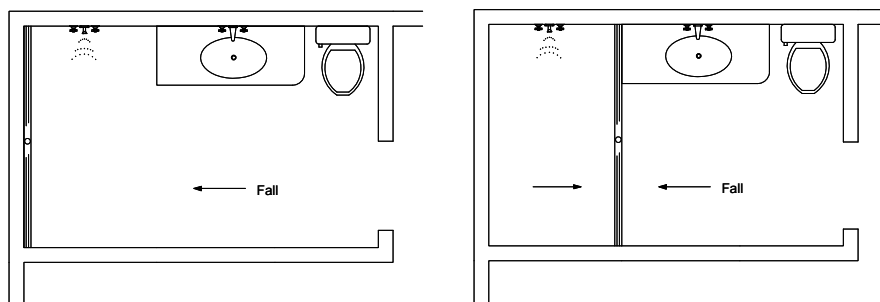
Email **info@stormtech.com.au**

100TiG20 Assembly.

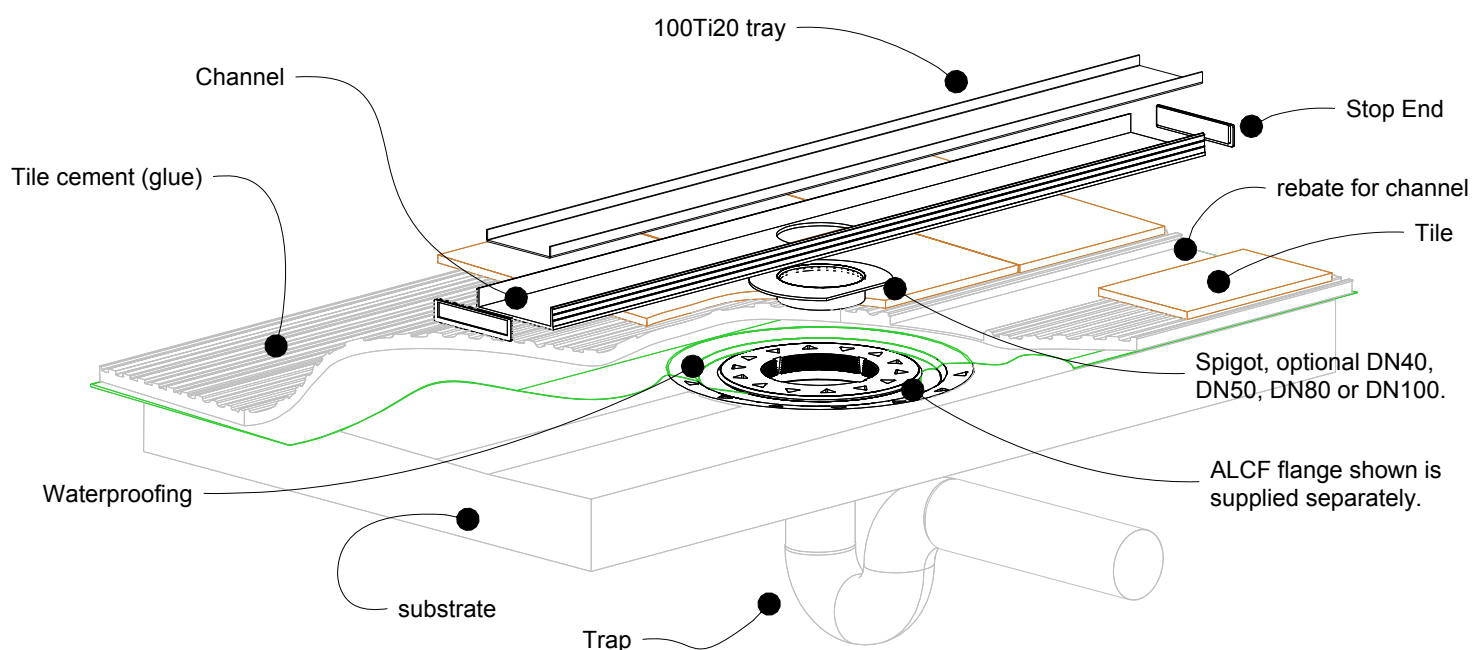
*NOTE, longest length of Ti tray 1200mm.
longest run possible 2.0m*



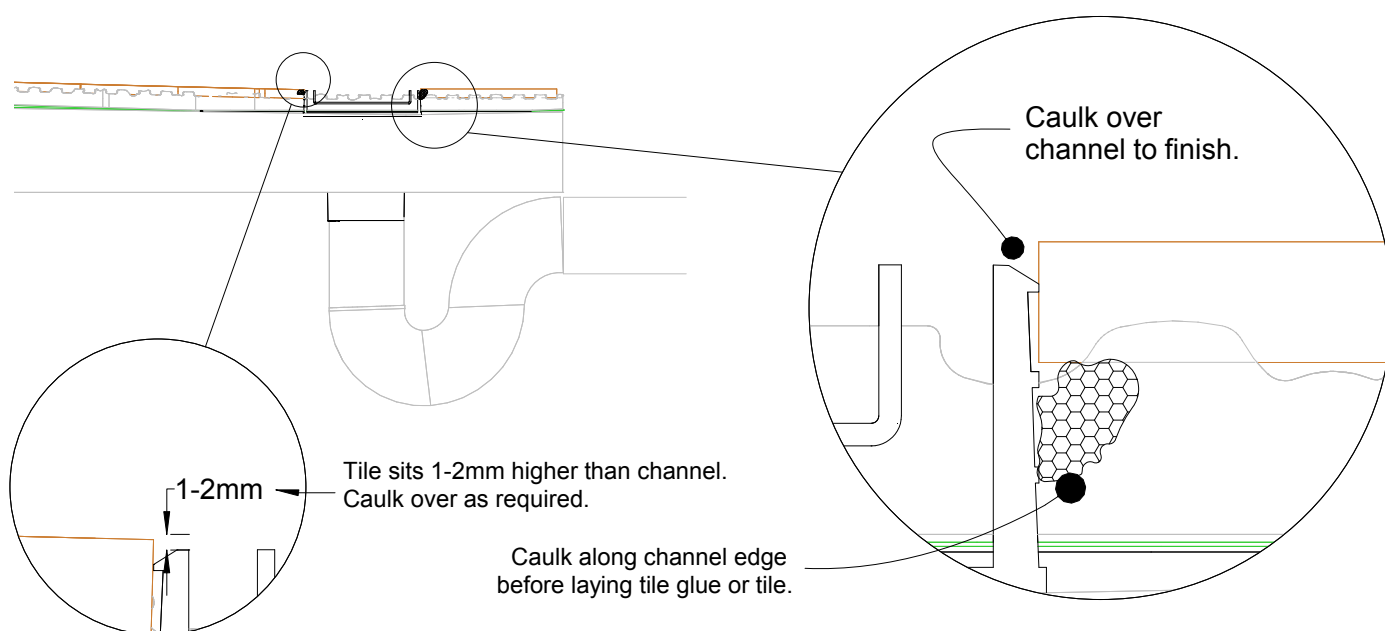
100TiG20 Bathroom



NOTE, ensure pipe sizes and outlet sizes selected are as per requirements in AS3500.



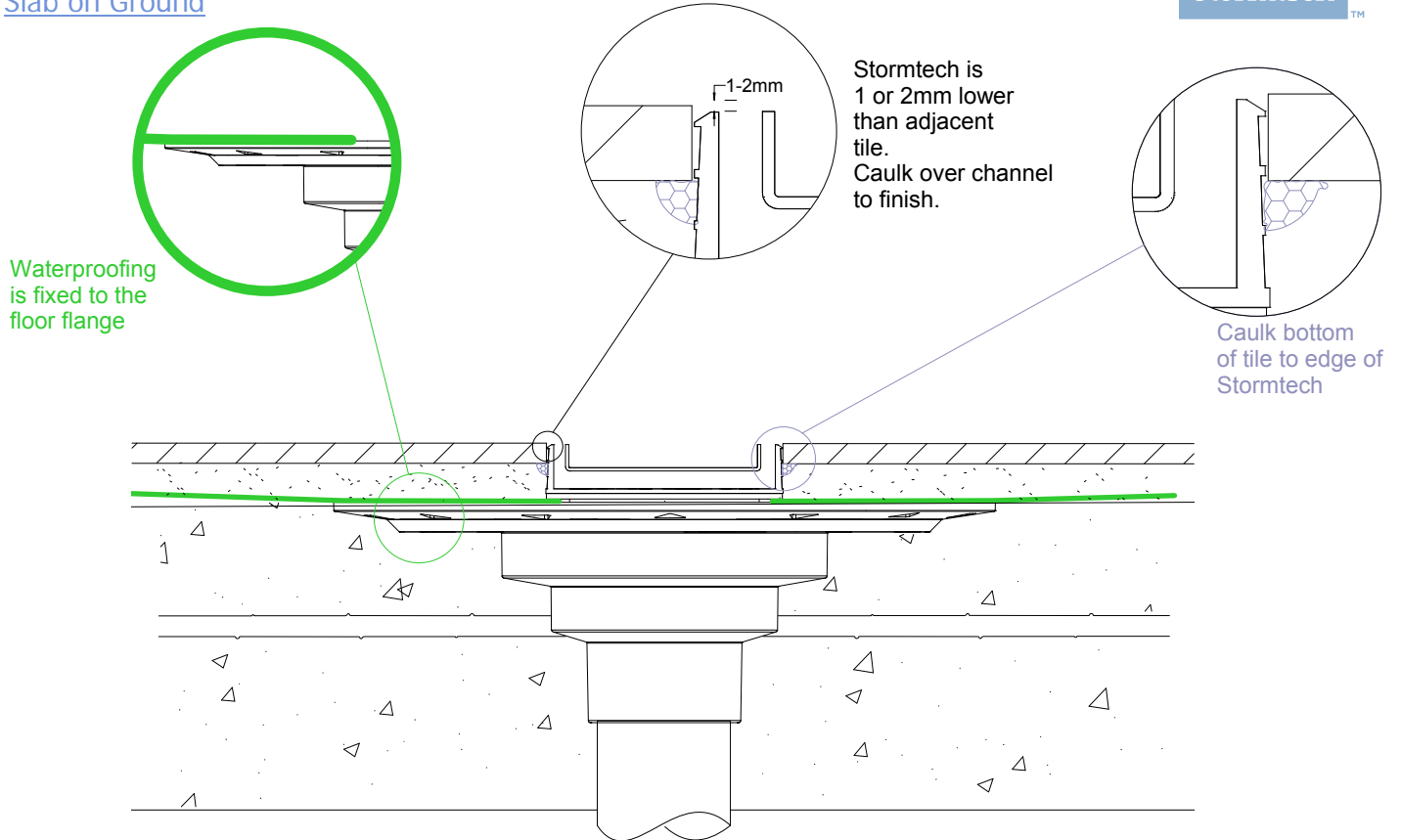
NOTE, this method requires the channel system to be ABOVE and SEPARATE from the WATERPROOFING.



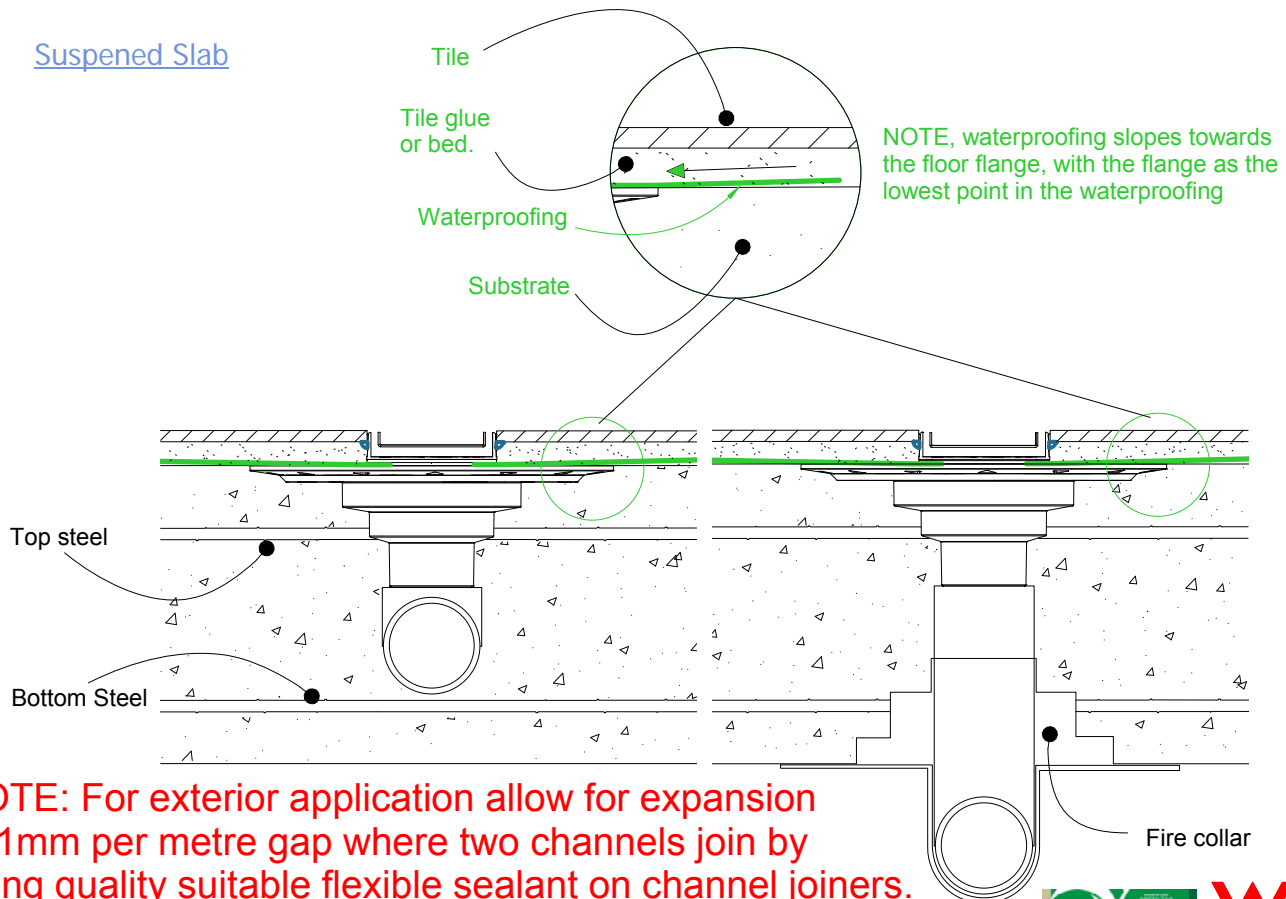
100TiG20 Concrete Floor or Deck



Slab on Ground



Suspended Slab



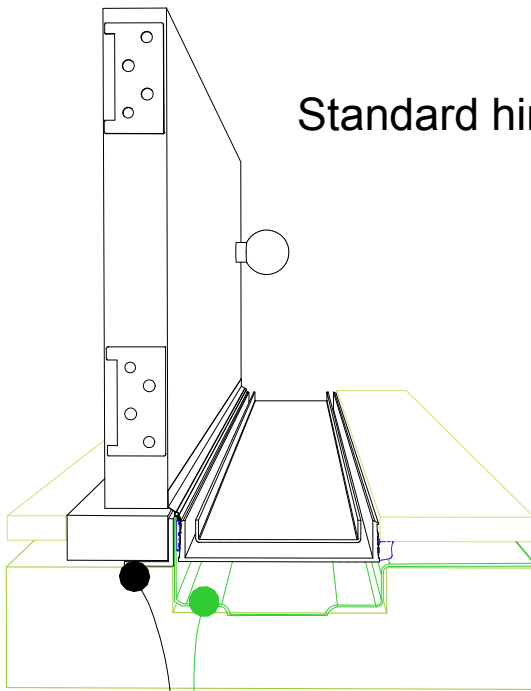
NOTE: For exterior application allow for expansion of 1mm per metre gap where two channels join by using quality suitable flexible sealant on channel joiners. Use PVC solvent cement for ends and outlets.



100TiG20 Threshold installation suggestion



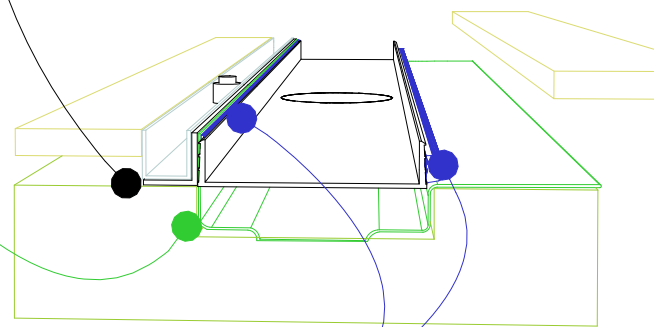
Standard hinged door



Aluminium angle to support waterproofing and junction between channel and door sil.

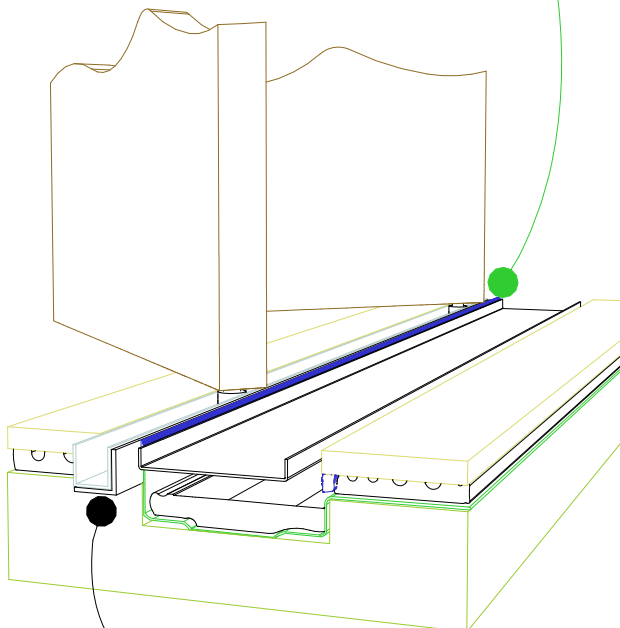
Top hung slider

Aluminium angle to support waterproofing and junction between channel and door track.



For all types of threshold installation ensure both sides of the channel are sealed before laying tile.

Bi-fold door



Aluminium angle to support waterproofing and junction between channel and door track.

NOTE, ensure weather stip is used on the appropriate side of the door to ensure drafts and moisture are minimised.

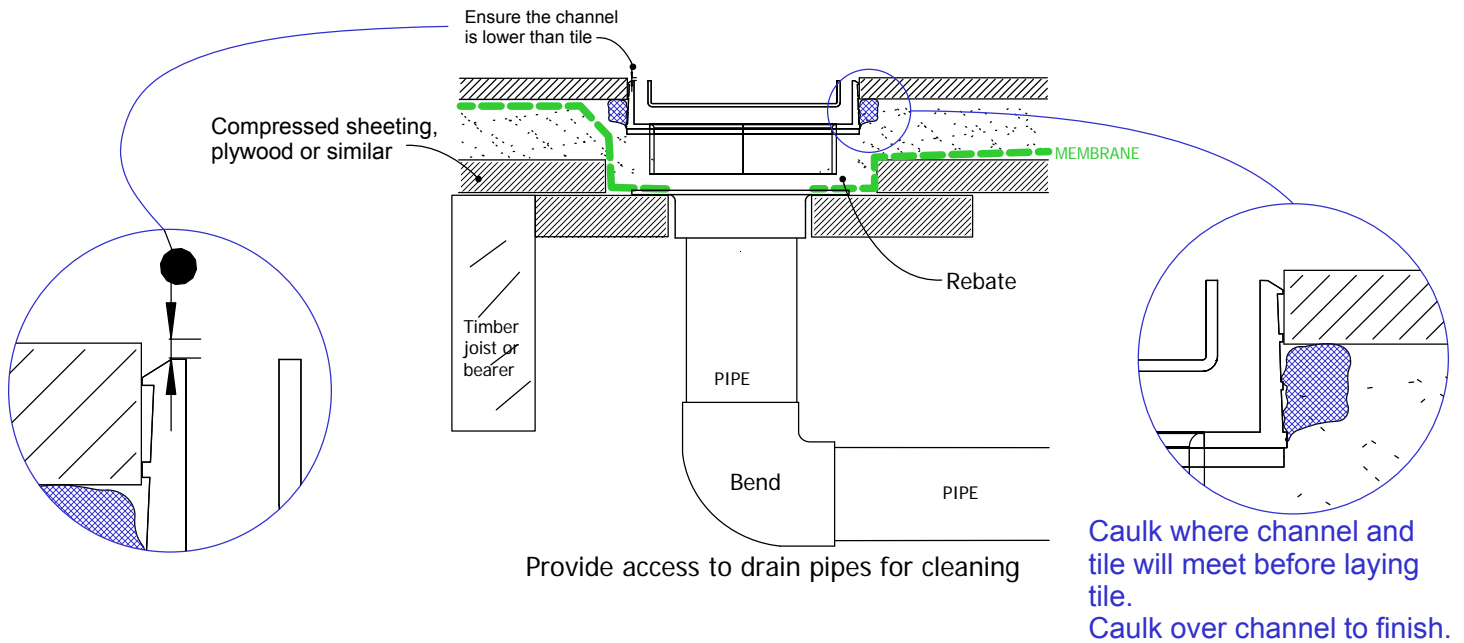
NOTE, ALWAYS ensure the waterproofing is completed before laying the Stormtech.



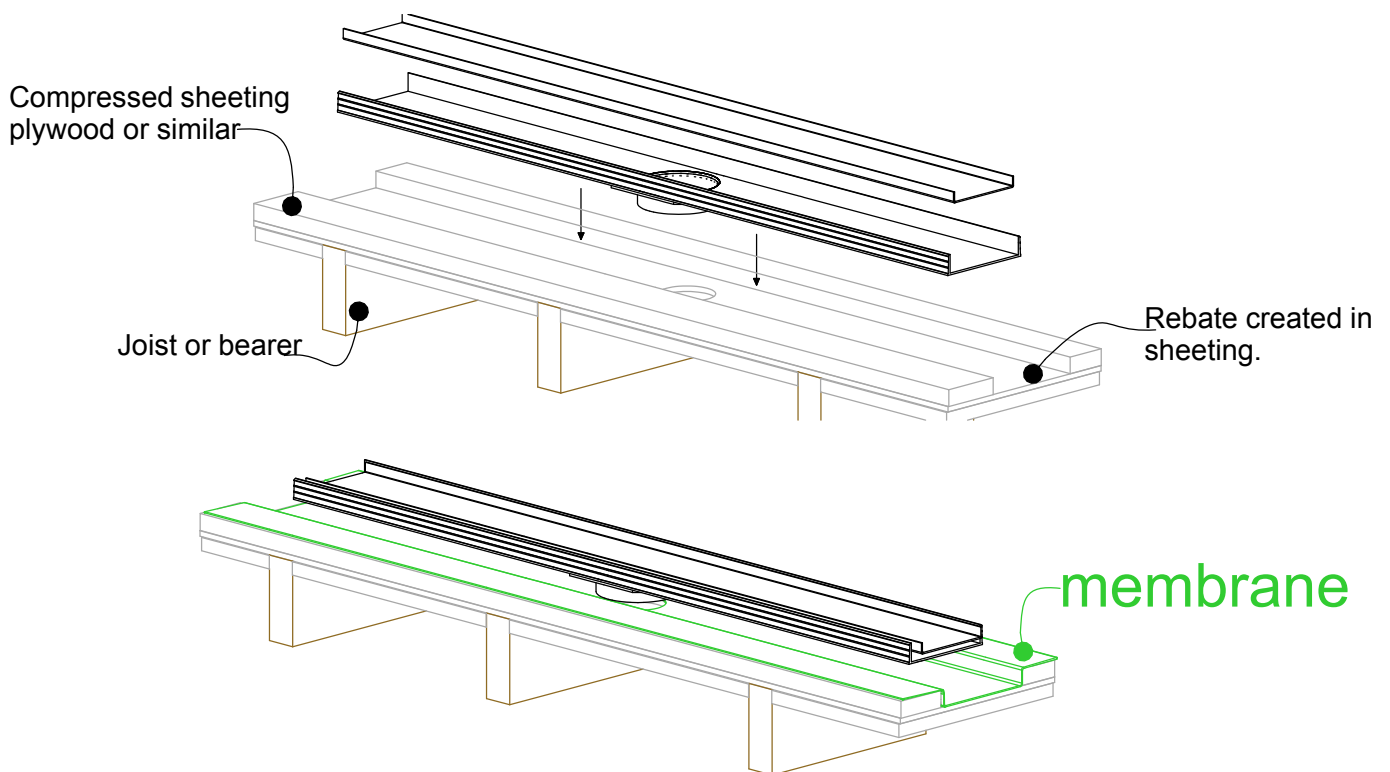
100TiG20 TIMBER FLOOR/DECK



When 100TiG20 is running parallel to joist/bearer



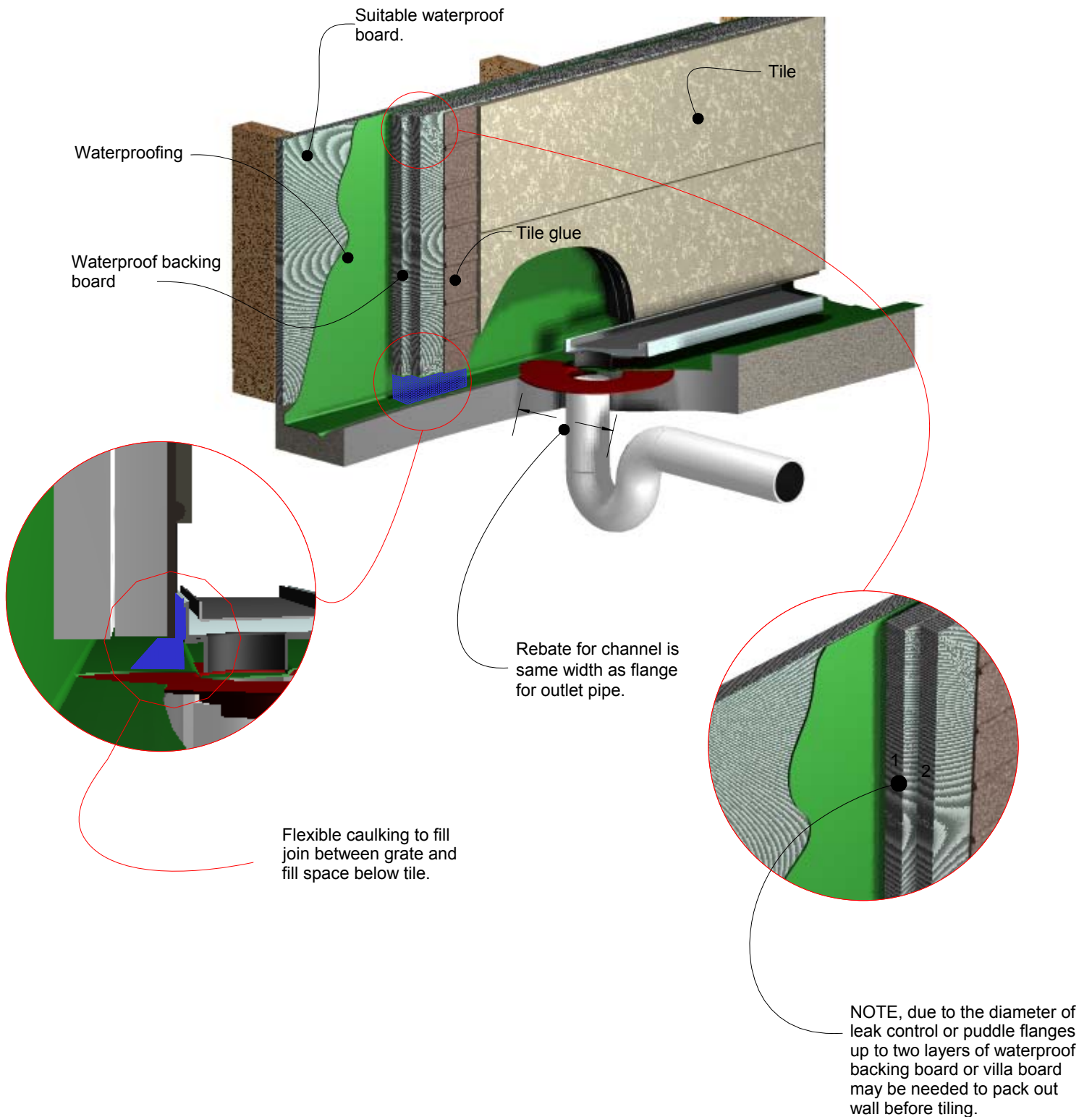
When 100TiG20 is running perpendicular to joist/bearer



NOTE: For exterior application allow for expansion of 1mm per metre by using quality suitable flexible sealant on channel joins. Use PVC solvent cement and primer on ends and outlets.



100TiG20 Against Wall



Visit **stormtech.com.au**



StormtechTM

22 Norfolk Avenue, South Nowra, NSW 2541 Australia

Phone 1300 653 403 Email info@stormtech.com.au

