

MODELS

RBA8300-340

RBA8300-440

RBA8302-200

RBA8302-300

RBA8302-340

SAFETY SHOWERS

Pedestal Mounted Eye/Face Wash

Wall Mounted Eye/Face Wash

Wall Mounted Emergency Shower

Emergency Shower Pedestal

Emergency Shower & Eye Wash Pedestal



*RBA8302-340 Shown

Components Supplied by Others

- Wall Fasteners for signage mounting
- Pipe sealant or Teflon tape for sealing water connections

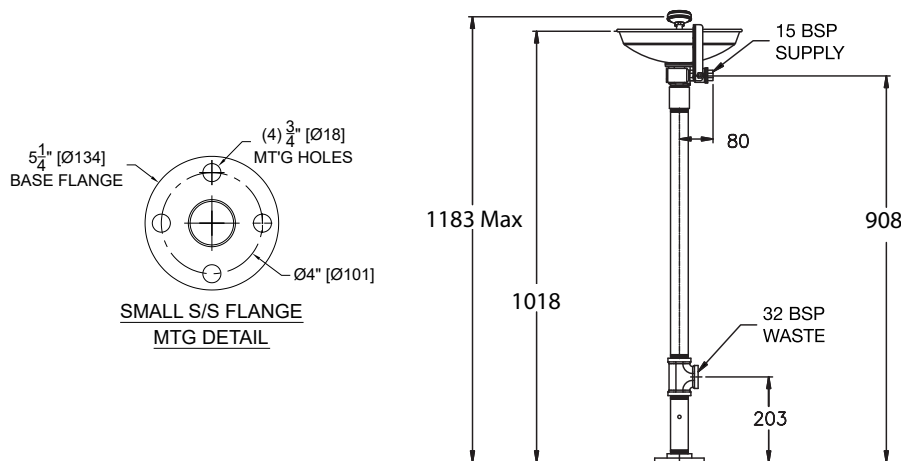
Pre-Installation

Please leave this documentation with the owner of the fixture when finished. Please read this entire booklet before beginning the installation. Check your installation for compliance with plumbing, electrical, AS4775, and other applicable codes.

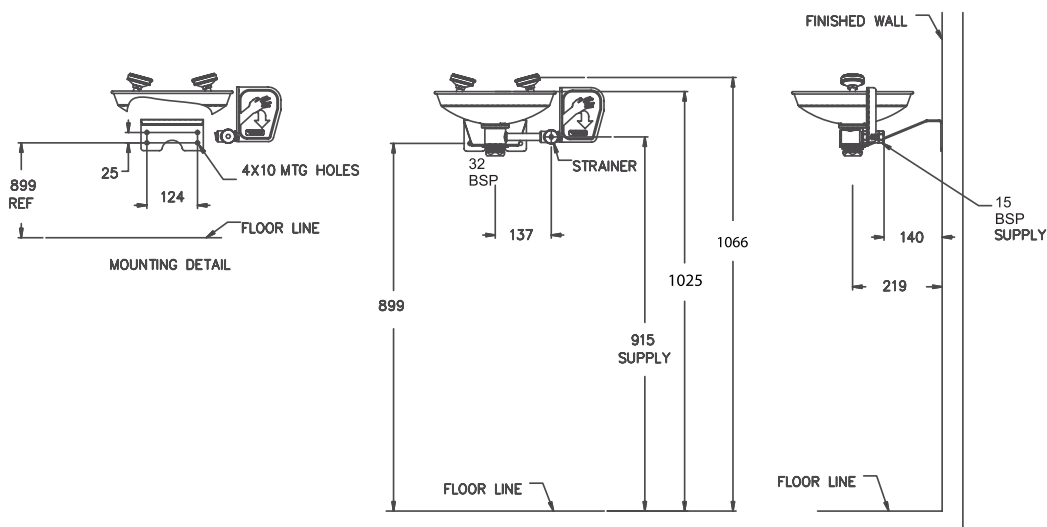
1. Top of spray nozzle must be between 838 - 1143mm from finished floor in order to meet AS4775.
2. Bottom of shower head must be between 2083 - 2438mm off finished floor
3. Refer to Rough-In location for supply and drain lines.

Rough-In

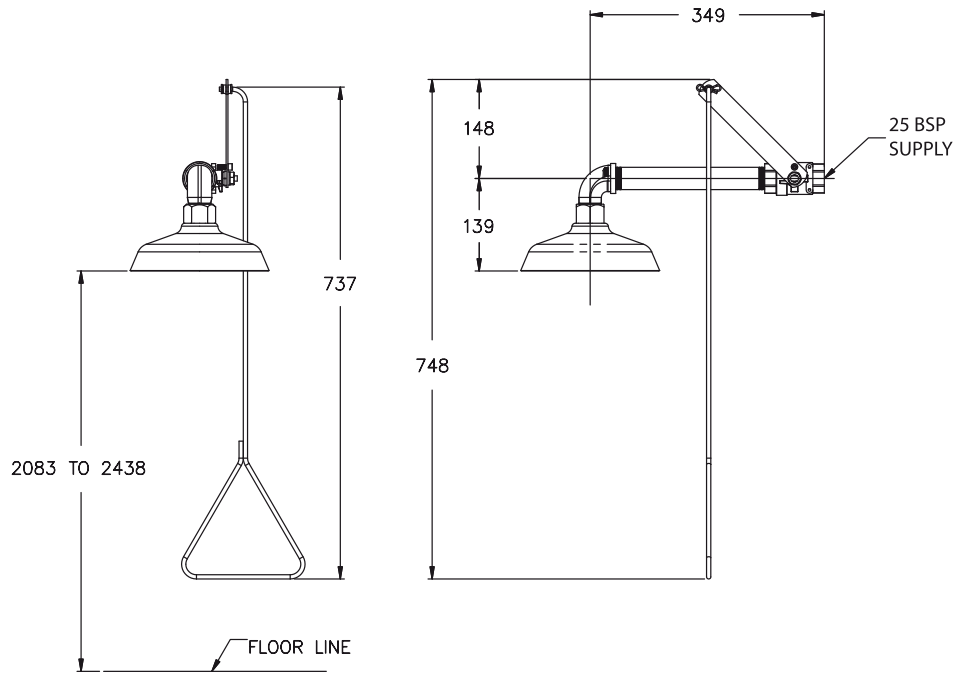
RBA8300-340



RBA8300-440



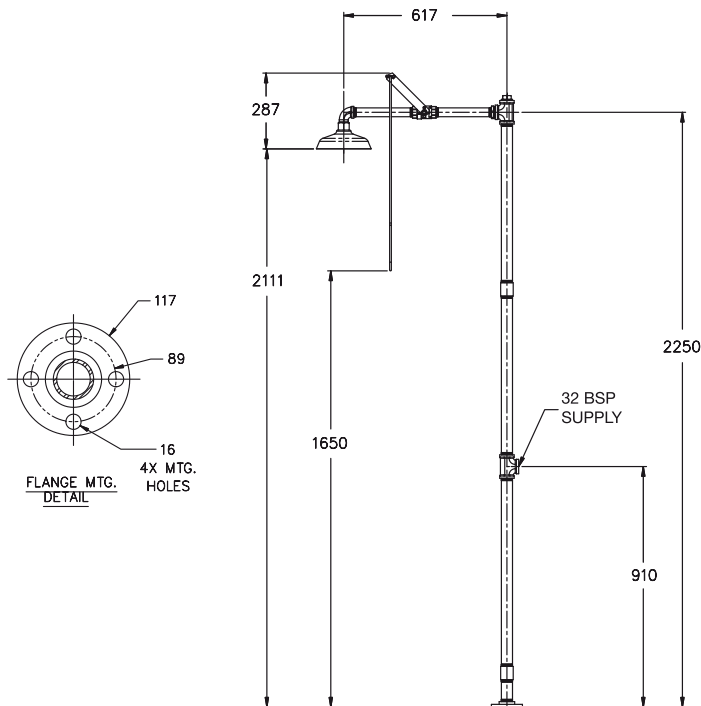
RBA8302-200



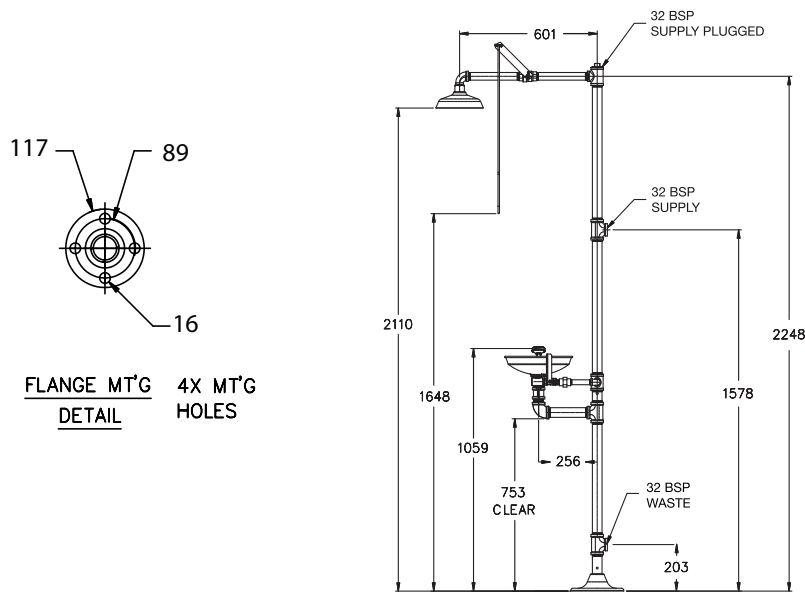
GENERAL NOTES:

1. ALL DIMENSIONS ARE IN MILLIMETERS
- *2. REQUIRES THE SHOWER HEAD TO BE MOUNTED AS4775 BETWEEN 2083 AND 2438 ABOVE THE FLOOR

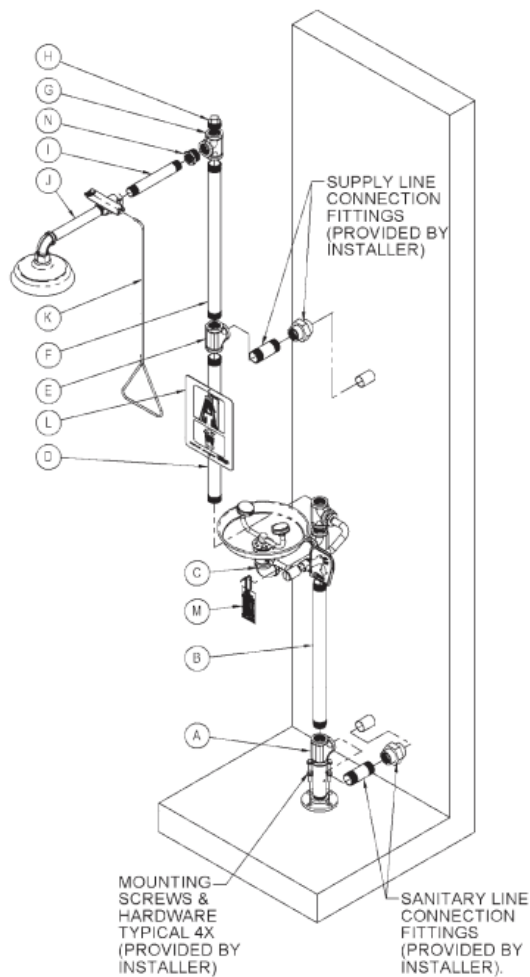
RBA8302-300



RBA8302-340



Installation Diagram



Installation - RBA8300-340

Pedestal

1. Locate and assemble components A, B & C to create freestanding pedestal base using proper plumbing techniques to seal all made up threads.
2. Position centre of pedestal assembly between 0 - 228mm from left and rear wall. Position centre of assembly 0 - 280mm from right side wall.
3. While holding the assembly in position, mark floor flange mounting hole positions.
4. Remove assembly and install appropriate floor anchors to receive mounting bolts [supplied by others].
5. Re-position assembly and install mounting bolts and washers.

Supply line

6. Install water line [supplied by others] in a position to align with ½" ball valve as shown in Rough-In.
7. Make connection to ½" adapter with appropriate fittings [supplied by others].
Note: Large fittings need to be avoided in the area as shown on the above figure, to avoid interference with valve paddle activation.
8. Open water supply.
9. Test for leaks, proper operation and flow.

Signage & Inspection

10. Position sign with clear visibility and in close proximity to safety equipment. Mark mounting hole locations.
11. Select appropriate 6mm anchors, screws and washers [supplied by others] to install signage.
12. Attach inspection tag supplied, with plastic zip tie

Installation - RBA8300-440

Mounting

1. Position assembly on wall at appropriate height and in proximity to the supply and drain lines.
2. While holding the assembly level against the wall, mark position of mounting bolt holes.
3. Remove assembly and install appropriate anchors into wall to receive 10mm diameter bolts [supplied by others].
4. Re-position assembly against wall and install 10mm bolts to secure the assembly to the wall

Drain Line

5. Install sanitary drain line [supplied by others] if not already done in a position which will align with eyewash assembly as shown in Rough-In.
6. Install 40mm waste.
7. Connect assembly drain with 40mm waste P-trap or elbow connection [supplied by others] to the sanitary drain previously mentioned.

Supply line

8. Install water line [supplied by others] in a position to align with ½" ball valve as shown in Rough-In.
9. Make connection to ½" adapter with appropriate fittings [supplied by others].
Note: Large fittings need to be avoided in the area as shown in the figure to the right, to avoid interference with valve paddle activation.
10. Open water supply.
11. Test for leaks, proper operation and flow.

Signage & Inspection

12. Position sign with clear visibility and in close proximity to safety equipment. Mark mounting hole locations.
13. Select appropriate 6mm anchors, screws and washers [supplied by others] to install signage.
14. Attach inspection tag supplied, with plastic zip tie

Installation - RBA8302-200

Mounting

1. Locate existing 25mm uninterrupted source of potable water supply [supplied by others] and flush to clear line of contamination.
2. Install the unit to the water supply using pipe sealant or Teflon tape.
3. Pipe wrench the unit as required to ensure there are no leaks.
4. Open water supply.
5. Test for leaks, proper operation and flow.

Signage & Inspection

6. Position sign with clear visibility and in close proximity to safety equipment. Mark mounting hole locations.
7. Select appropriate 6mm anchors, screws and washers [supplied by others] to install signage.
8. Attach inspection tag supplied, with plastic zip tie.

Installation - RBA8302-300

Pedestal

1. Locate and assemble components A, B & C to create freestanding pedestal base using proper plumbing techniques to seal all made up threads.
2. Position centre of pedestal assembly a minimum of 0 - 228mm from left and rear wall. Position from centre of assembly a minimum of 0 - 280mm from right side wall.
3. While holding the assembly in position, mark floor flange mounting hole positions.
4. Remove assembly and install appropriate floor anchors to receive mounting bolts [supplied by others].
5. Re-position assembly and install mounting bolts and washers.

Upper Shower Assembly

6. Assemble components D, E, F, G, & H to pedestal subassembly in sequential order using proper plumbing techniques to seal all made up threads.
7. Ensure that fittings are aligned and perpendicular as shown to allow for later stages of assembly
8. Assemble components N, I & J in a similar manner.
9. Assemble component K to valve with clips provided

Signage & Inspection

10. Position sign with clear visibility and in close proximity to safety equipment. Mark mounting hole locations.
11. Select appropriate 6mm anchors, screws and washers [supplied by others] to install signage.
12. Attach inspection tag supplied, with plastic zip tie

Installation - RBA8302-340

Pedestal

1. Locate and assemble components A, B & C to create freestanding pedestal base using proper plumbing techniques to seal all made up threads.
2. Position centre of pedestal assembly O - 228mm from left and rear wall. Position centre of assembly O - 280mm from right side wall.
3. While holding the assembly in position, mark floor flange mounting hole positions.
4. Remove assembly and install appropriate floor anchors to receive mounting bolts [supplied by others].
5. Re-position assembly and install mounting bolts and washers

Upper Shower Assembly

6. Assemble components D, E, F, G, & H to pedestal subassembly in sequential order using proper plumbing techniques to seal all made up threads.
7. Ensure that fittings are aligned and perpendicular as shown to allow for later stages of assembly
8. Assemble components N, I & J in a similar manner.
9. Assemble component K to valve with clips provided

Supply and Sanitary Drain Connection

Note: Refer to Rough-In for supply and drain line locations.

10. Install necessary pipe fittings [supplied by others] to make 32mm BSP waste tee connection with sanitary drain line.

Test

11. Verify 12mm supply valve for eye/face wash and 24mm supply valve for shower are turned OFF.
12. Turn on water supply to 32mm potable water supply.
13. Inspect system for leaks.
14. Verify shower and eye/ face wash flow proper

Signage & Inspection

15. Install sign L with clear visibility as shown, with appropriate hardware [supplied by others].
16. Attach inspection tag M supplied, with plastic zip tie to 12mm supply line as shown.

Note: This product should be installed, by suitably qualified persons, in a fit for purpose application, to suitable materials, using suitable fixings and comply with any relevant codes. It should be inspected periodically for signs of wear and tear that may affect performance or safety.

Dimensions are subject to manufacturer's tolerance of +/-10mm. Rough-in should be completed with each fixture.

Important: Installation Instructions are subject to change without notice.

Please visit **our websites** or latest revision.