

**DE** Gebrauchsanleitung / Montageanleitung

**EN** Instructions for use / assembly instructions

**2**

**3**



**Metris**

31454003



**Metris S**

31465003



**Metris**

31493003



**Metris Classic**

31485003



**Talis S**

72405003



**Talis E**

71745003



**Decor**

31945003



**PuraVida**

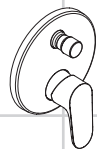
15445XX3



**Logis**

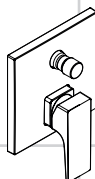
71405003

31945223



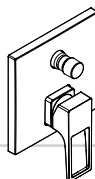
**Ecos**

14431003



**Metropol**

32545003



**Metropol**

74545003



**MySport**

71249000



**Novus**

71045003



**Logis Loop**

71264003

71248003



## Sicherheitshinweise

- ⚠ Bei der Montage müssen zur Vermeidung von Quetsch- und Schnittverletzungen Handschuhe getragen werden.
- ⚠ Das Produkt darf nur zu Bade-, Hygiene- und Körperreinigungszwecken eingesetzt werden.
- ⚠ Große Druckunterschiede zwischen den Kalt- und Warmwasseranschlüssen müssen ausgeglichen werden.

## Montagehinweise

- Vor der Montage muss das Produkt auf Transportschäden untersucht werden. Nach dem Einbau werden keine Transport- oder Oberflächenschäden anerkannt.
- Die Leitungen und die Armatur müssen nach den gültigen Normen montiert, gespült und geprüft werden.
- Die in den Ländern jeweils gültigen Installationsrichtlinien sind einzuhalten.

## Technische Daten

Betriebsdruck:	max. 1 MPa
Empfohlener Betriebsdruck:	0,1 - 0,5 MPa
Prüfdruck:	1,6 MPa
(1 MPa = 10 bar = 147 PSI)	
Heißwassertemperatur:	max. 70 °C
Empfohlene Heißwassertemperatur:	65 °C
Thermische Desinfektion:	max. 70 °C / 4 min

Das Produkt ist ausschließlich für Trinkwasser konzipiert!

## Symbolerklärung



Kein essigsäurehaltiges Silikon verwenden!



### Justierung (siehe Seite 6)

Einstellen der Warmwasserbegrenzung. In Verbindung mit Durchlauferhitzern ist eine Warmwassersperre nicht zu empfehlen.



### Bedienung (siehe Seite 7)



### Maße (siehe Seite 8)



### Durchflussdiagramm (siehe Seite 9)

freier Durchfluss:

- ① Abgang Brause
- ② Abgang Wanne



### Serviceteile (siehe Seite 15)

XX = Farbcodierung  
00 = chrom  
40 = weiß/chrom



### Sonderzubehör (siehe Seite 14)

nicht im Lieferumfang enthalten

- Verlängerung 22 mm (bei geringer Einbautiefe)
- Verlängerung 25 mm



### Reinigung (siehe Seite 9)

## Störung

## Ursache

## Abhilfe

Armatur schwergängig	- Kartusche defekt, verkalkt	- Kartusche austauschen
Armatur tropft	- Kartusche defekt	- Kartusche austauschen
Zu niedrige Warmwassertemperatur, kein Kaltwasser. Durchlauferhitzer springt an, wenn Kaltwasser angewählt wird.	- Warmwasserbegrenzung falsch eingestellt	- Warmwasserbegrenzung einstellen
	- Kreuzfluss	- Kartusche austauschen
Umsteller funktioniert nicht	- Ablagerungen	- Umsteller reinigen / O-Ringe fetten
	- Zu geringer Wasserdruck	- Wasserdruck erhöhen
	- Umsteller defekt	- Umsteller austauschen



## Montage (siehe Seite 4)



## Safety Notes

- ⚠ Gloves should be worn during installation to prevent crushing and cutting injuries.
- ⚠ The product may only be used for bathing, hygienic and body cleaning purposes.
- ⚠ The hot and cold supplies must be of equal pressures.

## Installation Instructions

- Prior to installation, inspect the product for transport damages. After it has been installed, no transport or surface damage will be honoured.
- The pipes and the fixture must be installed, flushed and tested as per the applicable standards.
- The plumbing codes applicable in the respective countries must be observed.

## Technical Data

Operating pressure:	max. 1 MPa
Recommended operating pressure:	0,1 - 0,5 MPa
Test pressure:	1,6 MPa
(1 MPa = 10 bar = 147 PSI)	
Hot water temperature:	max. 70 °C
Recommended hot water temp.:	65 °C
Thermal disinfection:	max. 70 °C / 4 min

The product is exclusively designed for drinking water!

## Symbol description



Do not use silicone containing acetic acid!



## Adjustment (see page 6)

To adjust the hot water limiter. Using a hot water limiter in combination with a continuous flow water heater is not recommended.



## Operation (see page 7)



## Dimensions (see page 8)



## Flow diagram (see page 9)

free flow:

- ① Shower outlet
- ② Tub outlet



## Spare parts (see page 15)

XX = Colors  
00 = chrome plated  
40 = white/chrome plated



## Special accessories (see page 14)

order as an extra

- Extension Set 22 mm (when wall is not deep enough).
- extension 25 mm

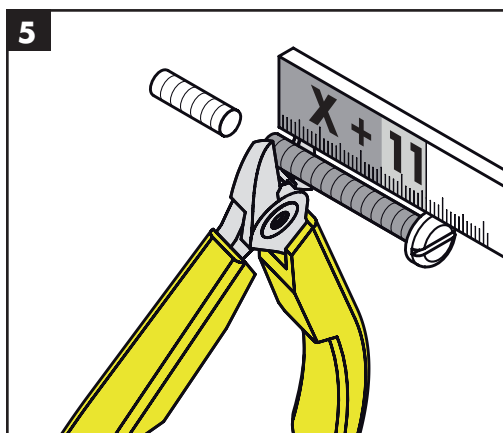
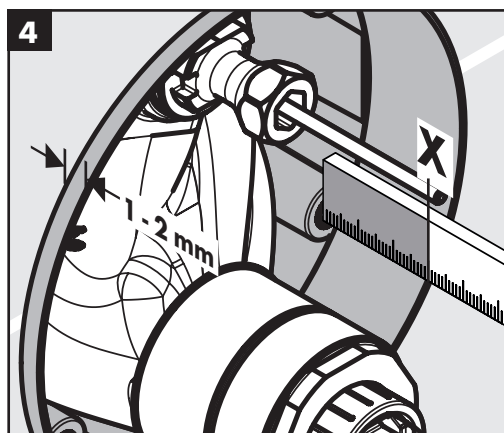
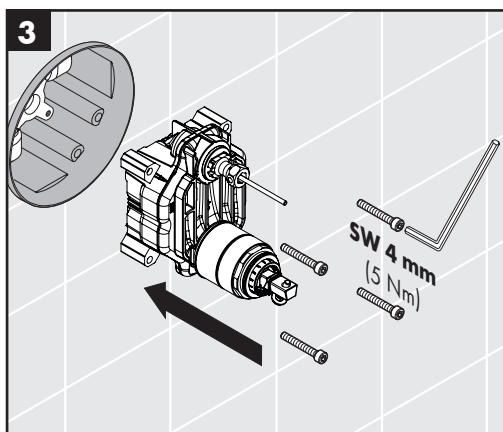
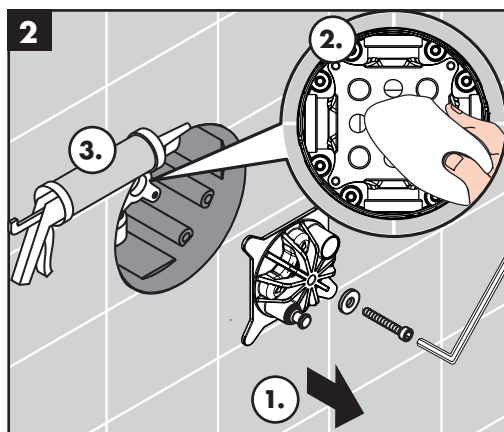
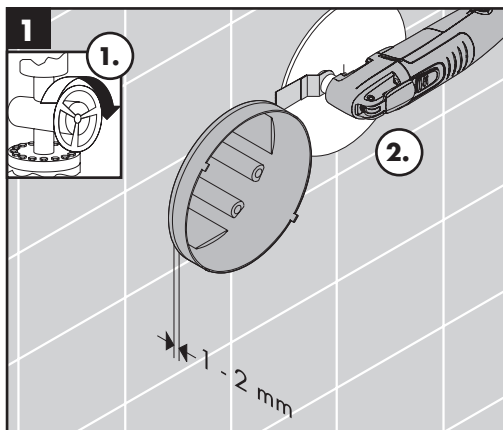
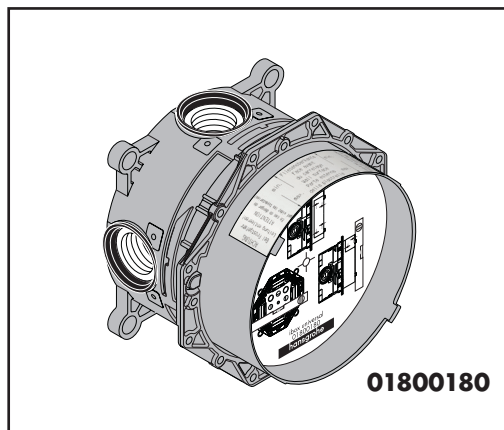


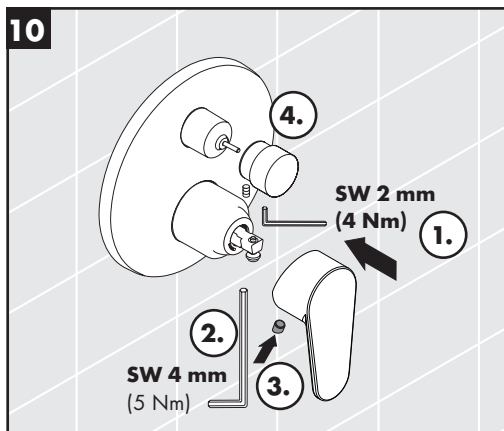
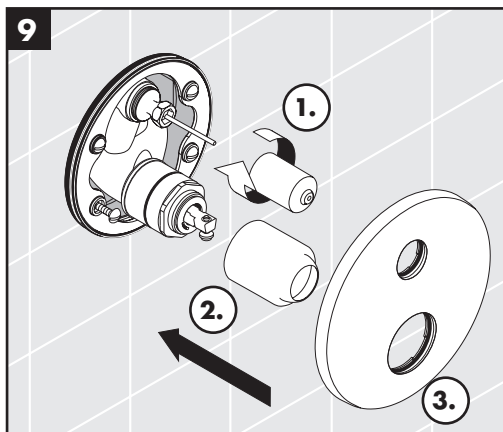
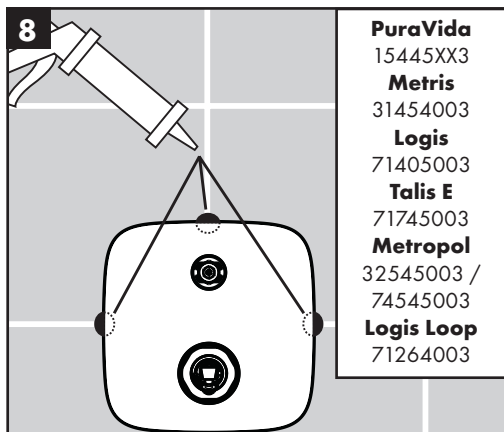
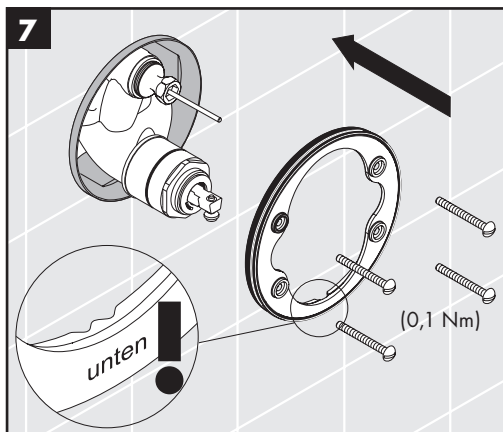
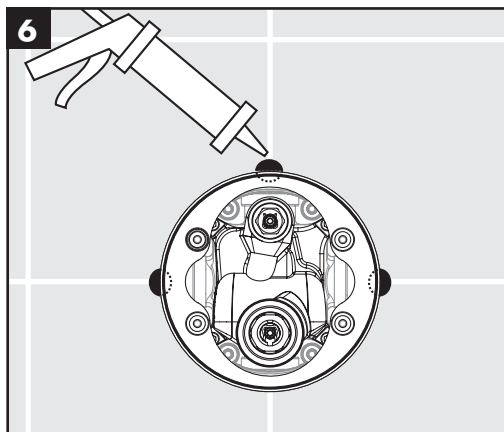
## Cleaning (see page 9)

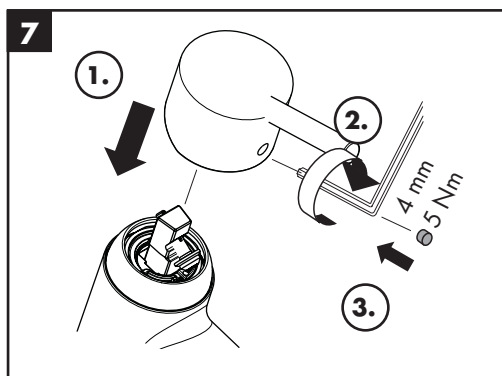
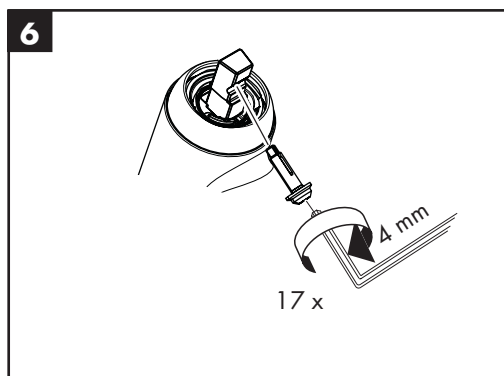
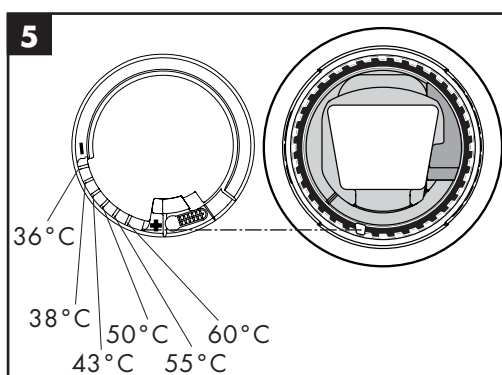
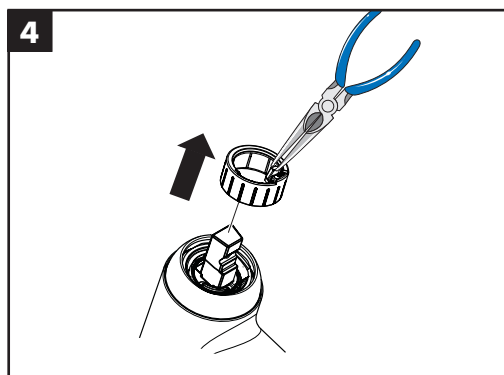
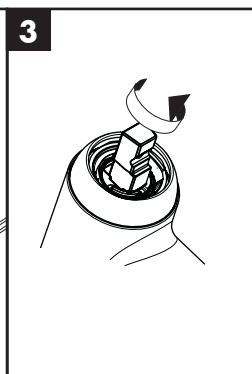
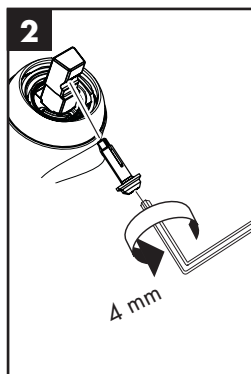
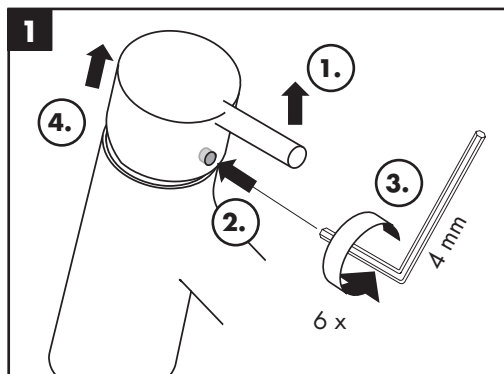
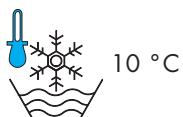
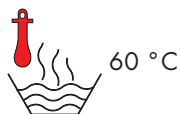
Fault	Cause	Remedy
Mixer stiff	- Cartridge defective, calcified	- Exchange cartridge
Mixer dripping	- Cartridge defective	- Exchange cartridge
Hot water temperature too low, no cold water. Instantaneous water heater starts up when cold water is selected.	- Hot water limiter incorrectly set	- Set hot water limiter
	- Crossflow	- Exchange cartridge
Diverter not operating	- Residue	- Clean converter / grease O-rings
	- Water pressure too low	- Increase water pressure
	- Diverter defective	- Exchange diverter

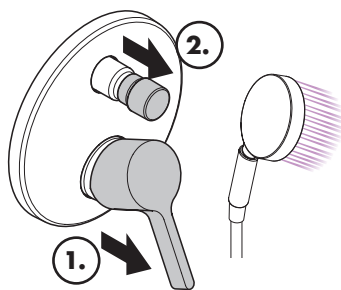
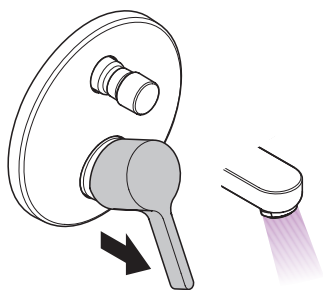


## Assembly (see page 4)

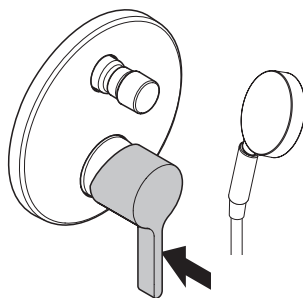
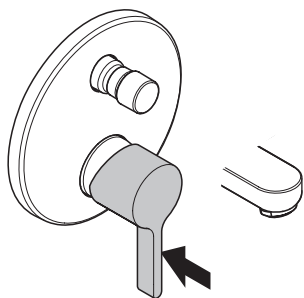




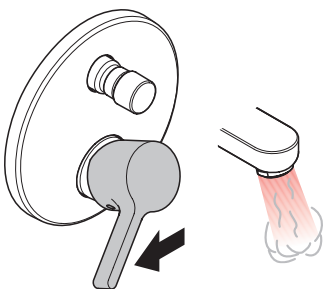




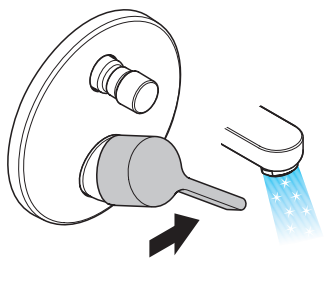
öffnen / open



schließen / close



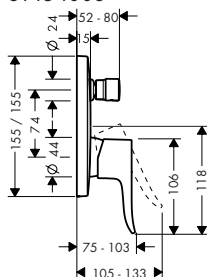
warm / hot



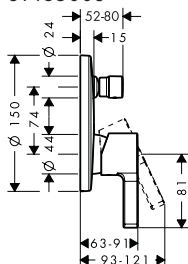
kalt / cold



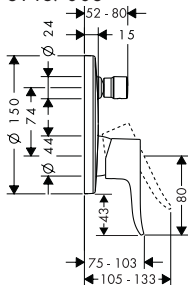
**Metris**  
31454003



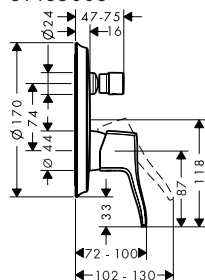
**Metris S**  
31465003



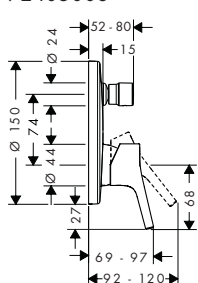
**Metris**  
31487003



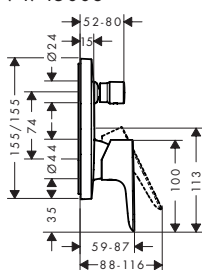
**Metris Classic**  
31485003



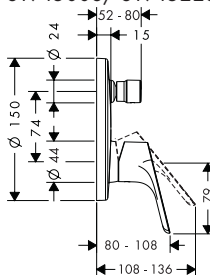
**Talis S**  
72405003



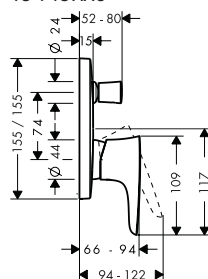
**Talis E**  
71745003



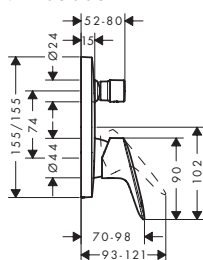
**Decor**  
31945003/ 31945223



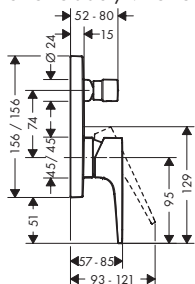
**PuraVida**  
15445XX3



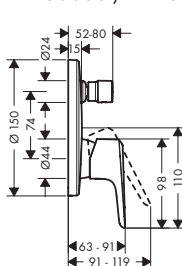
**Logis**  
71405003



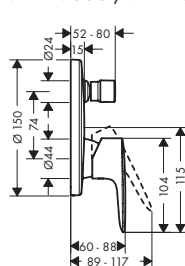
**Metropol**  
32545003 / 74545003



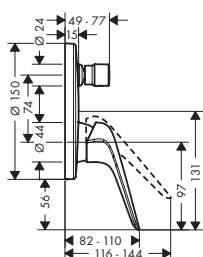
**Ecos**  
14430000 / 14431003



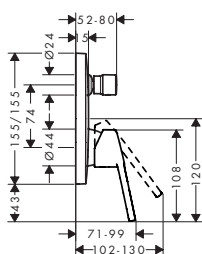
**MySport**  
71249000 / 71248003



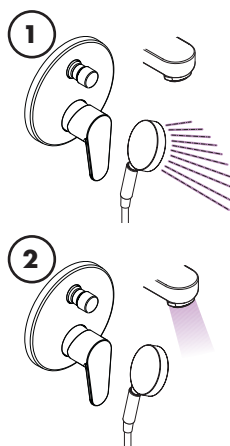
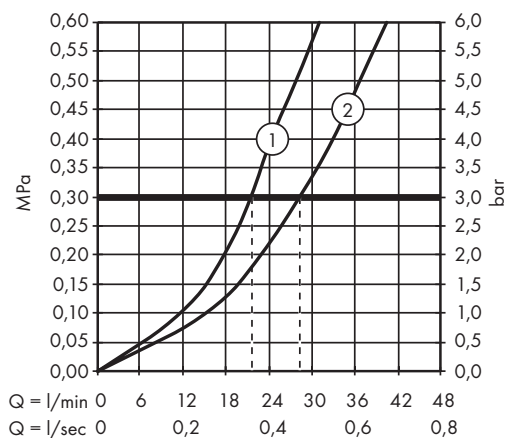
**Novus**  
71045003



**Logis Loop**  
71264003







**DE** Reinigungsempfehlung / Garantie / Kontakt

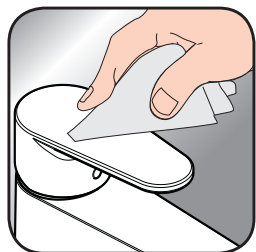
**EN** Cleaning recommendation / Warranty / Contact



[www.hansgrohe.com/  
cleaning-recommendation](http://www.hansgrohe.com/cleaning-recommendation)



[www.hansgrohe.com/  
cleaning-recommendation](http://www.hansgrohe.com/cleaning-recommendation)



[www.hansgrohe.com/  
cleaning-recommendation](http://www.hansgrohe.com/cleaning-recommendation)



[www.hansgrohe.com/  
cleaning-recommendation](http://www.hansgrohe.com/cleaning-recommendation)





**Ecos** 14430000 / 14431003

**MySport** 71249000 / 71248003

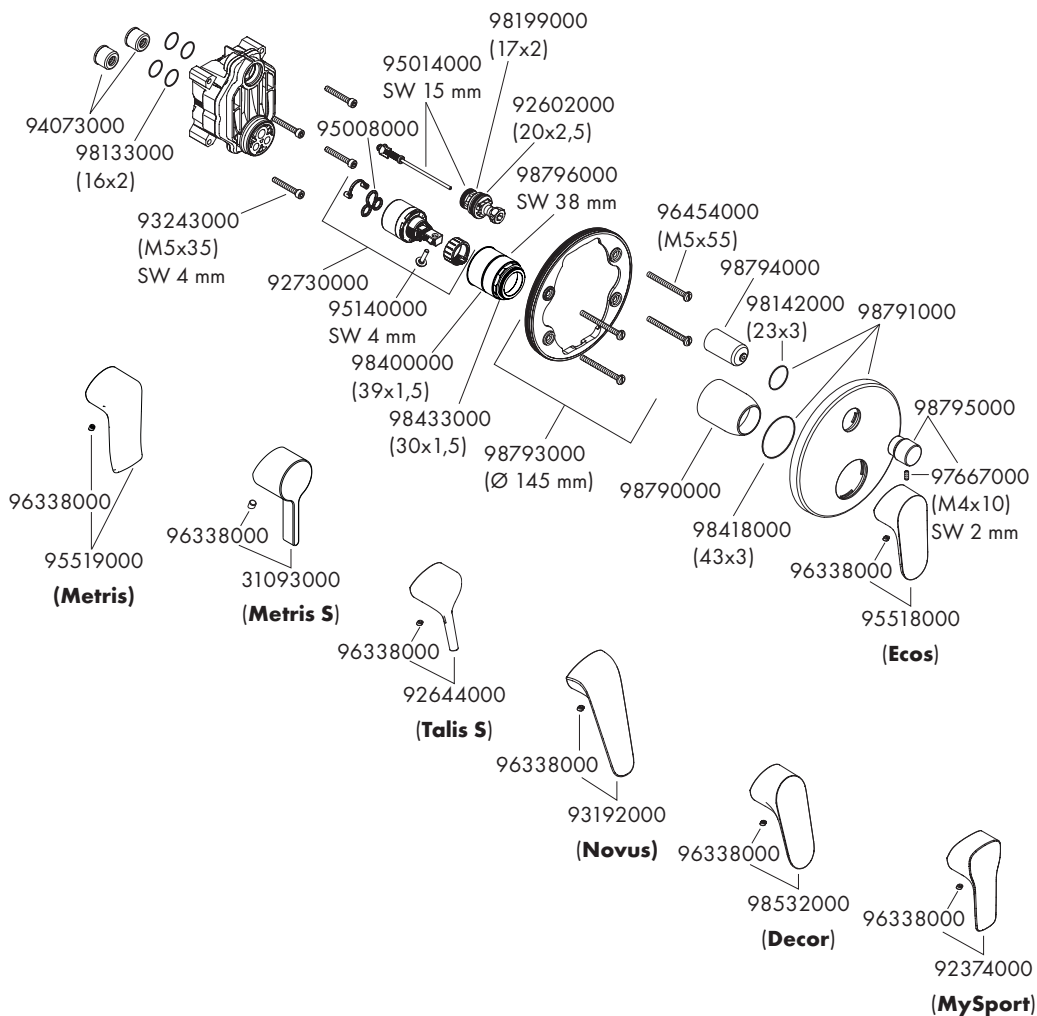
**Decor** 31945003 / 31945223

**Novus** 71045003

**Metris S** 31465003

**Talis S** 72405003

**Metris** 31493003





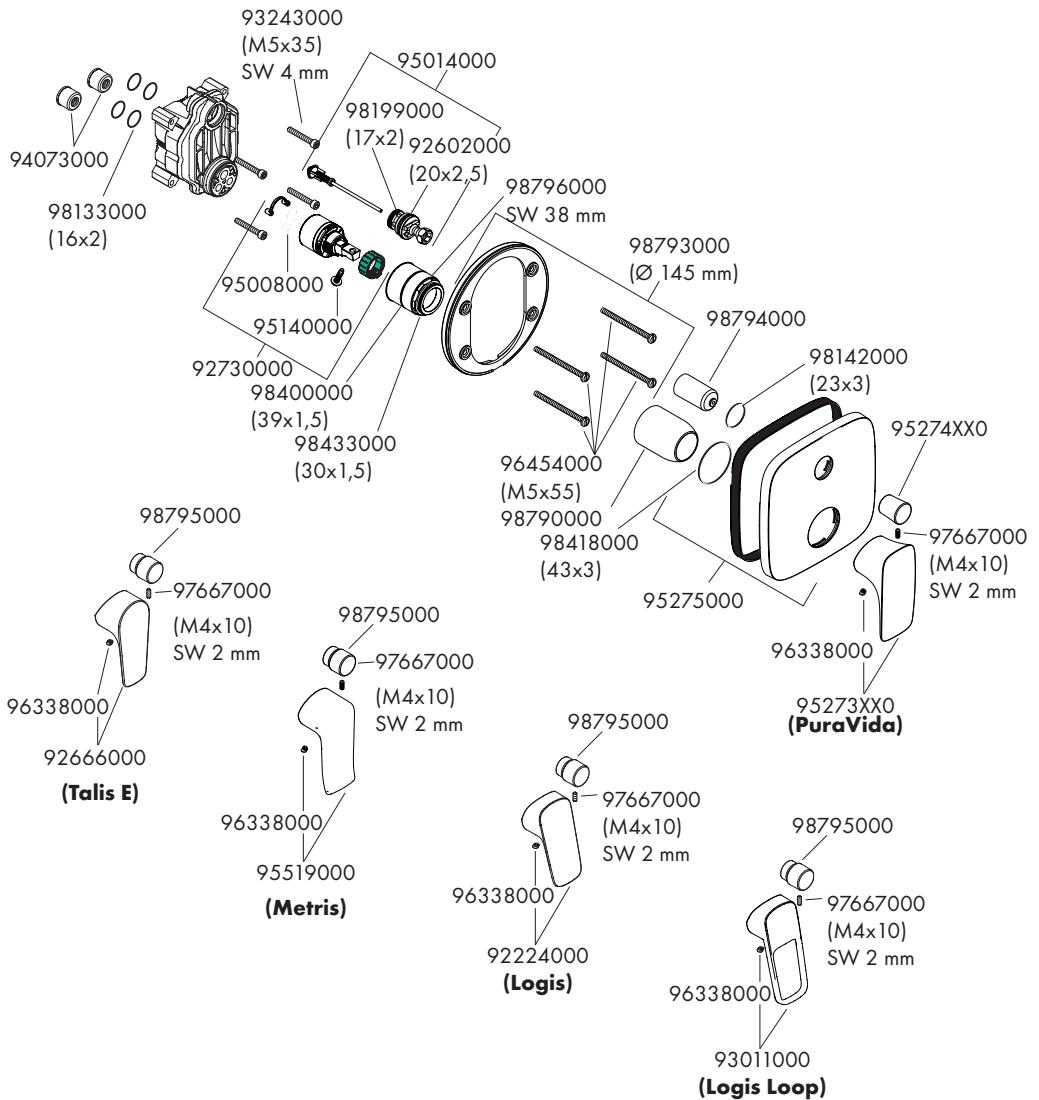
**PuraVida** 15445XX3

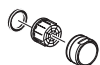
**Metris** 31454003

**Logis** 71405003

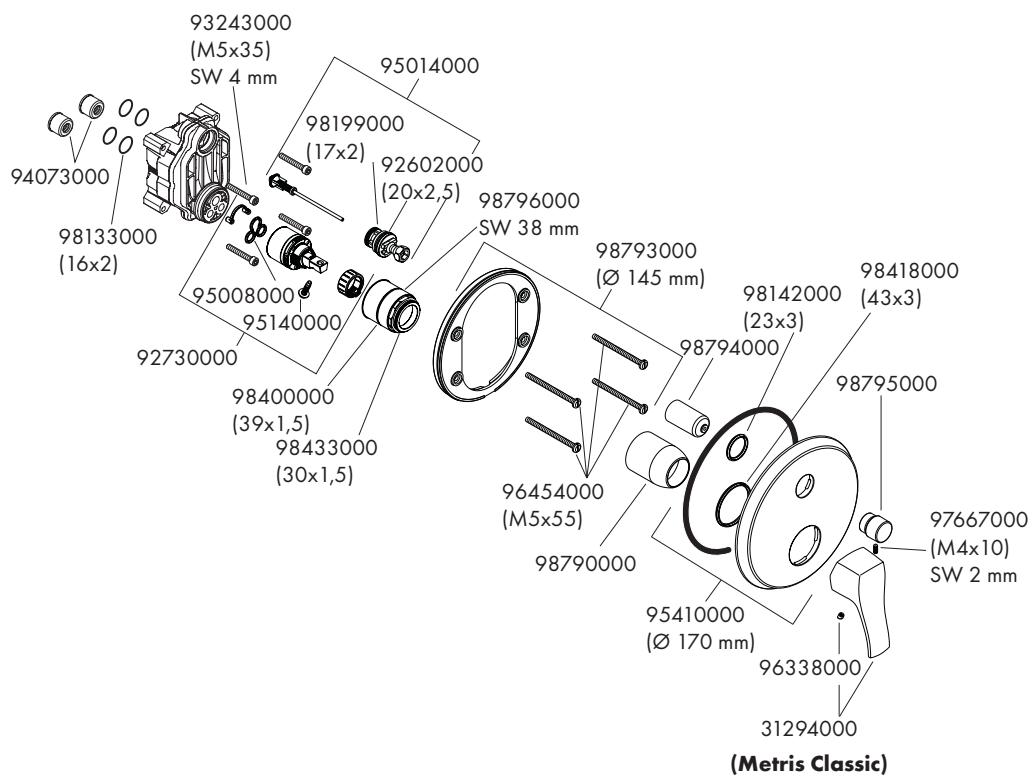
**Logis Loop** 71264003

**Talis E** 71745003



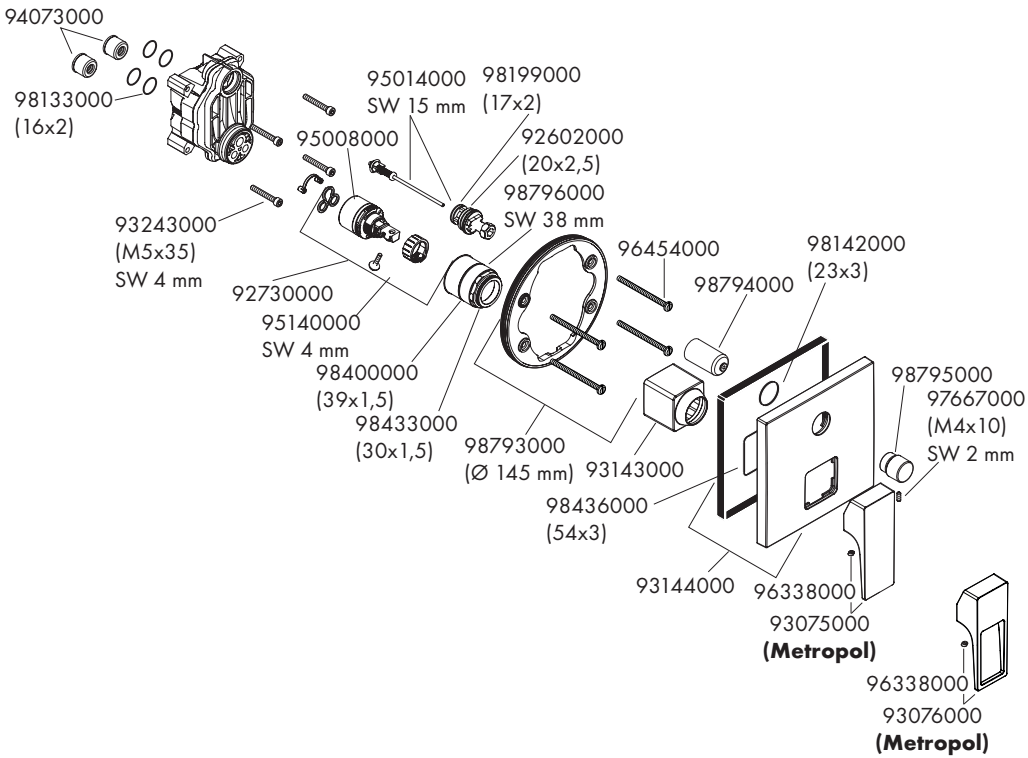


## Metris Classic 31485003





**Metropol 32545003 / 74545003**





**Metris S** 31465003

**Decor** 31945003

**Talis S** 72405003

**Metris** 31493003

**Ecos** 14430000 / 14431003

**MySport** 71249000 / 71248003

**Decor** 31945223

**Novus** 71045003

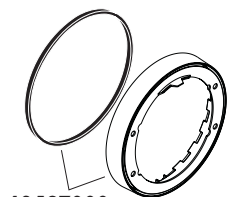
**PuraVida** 15445XX3

**Metris** 31454003

**Logis** 71405003

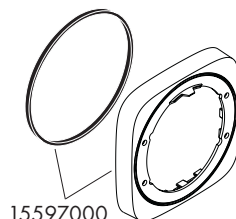
**Logis Loop** 71264003

**Talis E** 71745003



13597000

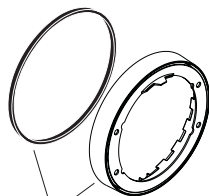
(22 mm)



15597000

(22 mm)

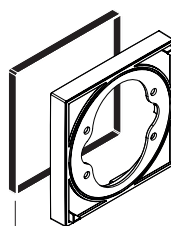
**Metris Classic** 31485003



13596000

(22 mm Ø 170 mm)

**Metropol** 32545003 / 74545003



15593000

(22 mm)

**Metris S** 31465003

**Decor** 31945003

**Talis S** 72405003

**Metris** 31493003

**Ecos** 14430000 / 14431003

**MySport** 71249000 / 71248003

**Decor** 31945223

**Novus** 71045003

**PuraVida** 15445XX3

**Metris** 31454003

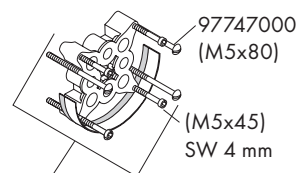
**Logis** 71405003

**Logis Loop** 71264003

**Talis E** 71745003

**Metris Classic** 31485003

**Metropol** 32545003 / 74545003



97747000  
(M5x80)

(M5x45)  
SW 4 mm

13595000  
(25 mm)



---

The Hansgrohe logo, consisting of the word "hansgrohe" in a white, lowercase, sans-serif font, centered within a solid black rectangular background.

Hansgrohe · Avestraße 5 · 9 · D-77761 Schiltach · Telefon +49 (0) 78 36/51-1282 · Telefax +49 (0) 7836/511440  
E-Mail: [info@hansgrohe.com](mailto:info@hansgrohe.com) · Internet: [www.hansgrohe.com](http://www.hansgrohe.com)

12/2018  
9,0841935