

EN Instructions for use / assembly instructions

DE Gebrauchsanleitung / Montageanleitung

2

3



Metris
31456003



Metris S
31665XX3



Metris
31685003



Metris Classic
31676003



Talis S
72605XX3



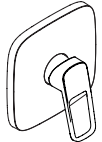
Talis E
71765003



Decor
31965XX3



Logis
71605003



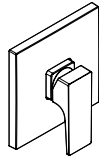
Logis Loop
71267003



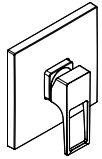
Talis S
32675003



Ecos
14630000



Metropol
32565003



Metropol
74565003



PuraVida
15665XX3



MySport
71269000



Novus
71065003



Novus Loop
71365003



Safety Notes

- ⚠ Gloves should be worn during installation to prevent crushing and cutting injuries.
- ⚠ The product may only be used for bathing, hygienic and body cleaning purposes.
- ⚠ The hot and cold supplies must be of equal pressures.

Installation Instructions

- Prior to installation, inspect the product for transport damages. After it has been installed, no transport or surface damage will be honoured.
- The pipes and the fixture must be installed, flushed and tested as per the applicable standards.
- The plumbing codes applicable in the respective countries must be observed.

Technical Data

Operating pressure: max. 1 MPa
 Recommended operating pressure: 0,1 - 0,5 MPa
 Test pressure: 1,6 MPa
 (1 MPa = 10 bar = 147 PSI)

Hot water temperature: max. 70 °C
 Recommended hot water temp.: 65 °C
 Thermal disinfection: max. 70 °C / 4 min

The product is exclusively designed for drinking water!

Symbol description



Do not use silicone containing acetic acid!



Adjustment (see page 6)

To adjust the hot water limiter. Using a hot water limiter in combination with a continuous flow water heater is not recommended.



Dimensions (see page 8)



Flow diagram (see page 9)

free flow



Spare parts (see page 10)

XX = Colors
 00 = Chrome Plated
 34 = Brushed Black Chrome
 40 = White/Chrome Plated
 67 = Matt Black
 95 = Brushed Brass



Special accessories (see page 14)

order as an extra

- extension 25 mm #13596000
- Extension Set 22 mm (when wall is not deep enough) #13597000, 13596000, 15597000, 15593000



Cleaning (see page 15)



Operation (see page 7)

Fault	Cause	Remedy
Mixer stiff	- Cartridge defective, calcified	- Exchange cartridge
Mixer dripping	- Cartridge defective	- Exchange cartridge
Hot water temperature too low, no cold water. Instantaneous water heater starts up when cold water is selected.	- Hot water limiter incorrectly set - Crossflow	- Set hot water limiter - Exchange cartridge





Sicherheitshinweise

- ⚠ Bei der Montage müssen zur Vermeidung von Quetsch- und Schnittverletzungen Handschuhe getragen werden.
- ⚠ Das Produkt darf nur zu Bade-, Hygiene- und Körperreinigungszwecken eingesetzt werden.
- ⚠ Große Druckunterschiede zwischen den Kalt- und Warmwasseranschlüssen müssen ausgeglichen werden.

Montagehinweise

- Vor der Montage muss das Produkt auf Transportschäden untersucht werden. Nach dem Einbau werden keine Transport- oder Oberflächenschäden anerkannt.
- Die Leitungen und die Armatur müssen nach den gültigen Normen montiert, gespült und geprüft werden.
- Die in den Ländern jeweils gültigen Installationsrichtlinien sind einzuhalten.

Technische Daten

Betriebsdruck: max. 1 MPa
 Empfohlener Betriebsdruck: 0,1 - 0,5 MPa
 Prüfdruck: 1,6 MPa
 (1 MPa = 10 bar = 147 PSI)
 Heißwassertemperatur: max. 70 °C
 Empfohlene Heißwassertemperatur: 65 °C
 Thermische Desinfektion: max. 70 °C / 4 min
 Das Produkt ist ausschließlich für Trinkwasser konzipiert!

Symbolerklärung



Kein essigsäurehaltiges Silikon verwenden!



Justierung (siehe Seite 6)

Einstellen der Warmwasserbegrenzung. In Verbindung mit Durchlauferhitzern ist eine Warmwassersperre nicht zu empfehlen.



Maße (siehe Seite 8)



Durchflussdiagramm (siehe Seite 9)

freier Durchfluss



Serviceteile (siehe Seite 10)

XX = Farbcodierung
 00 = Chrom
 34 = Brushed Black Chrome
 40 = Weiß/Chrom
 67 = Mattschwarz
 95 = Brushed Brass



Sonderzubehör (siehe Seite 14)

nicht im Lieferumfang enthalten

- Verlängerung 25 mm #13596000
- Verlängerung 22 mm (bei geringer Einbautiefe) #13597000, 13596000, 15597000, 15593000

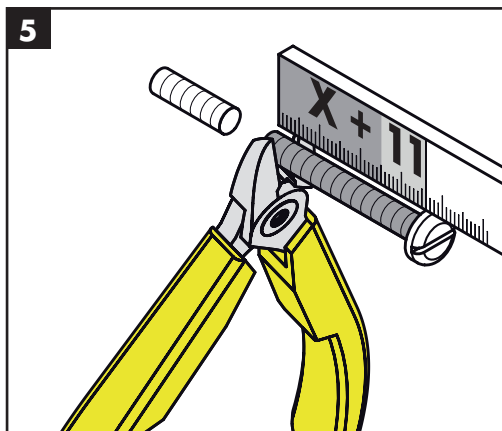
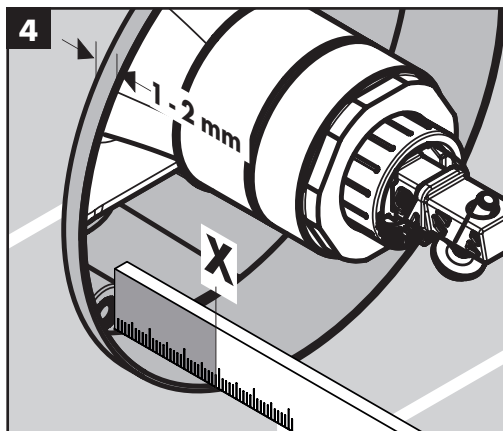
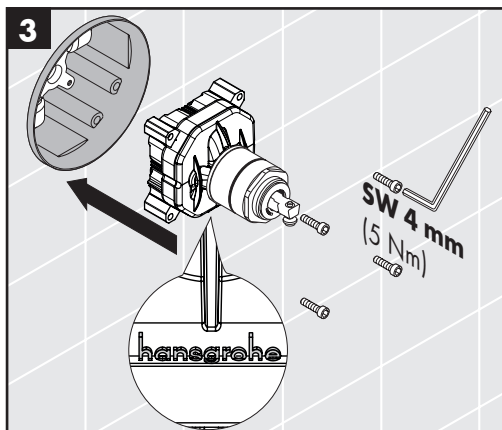
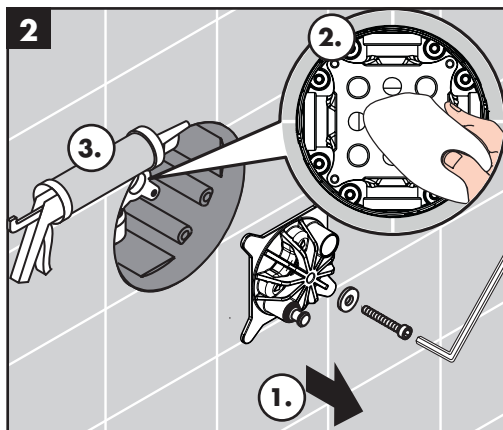
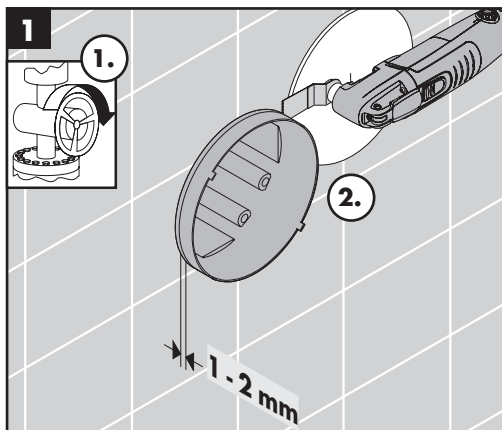
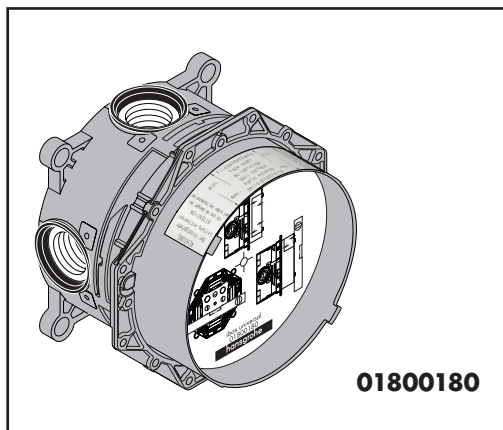


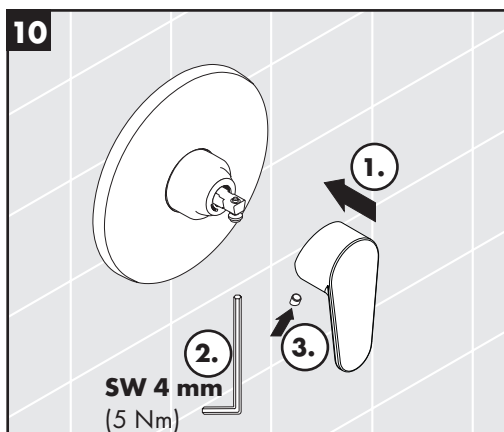
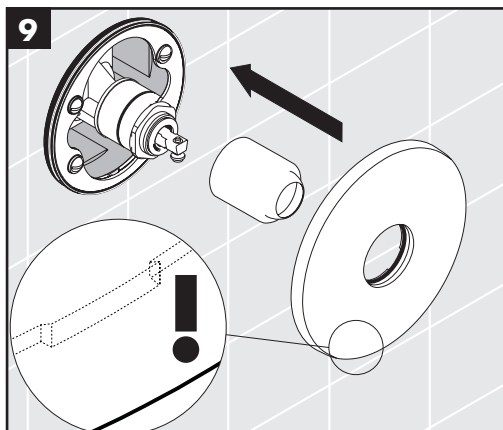
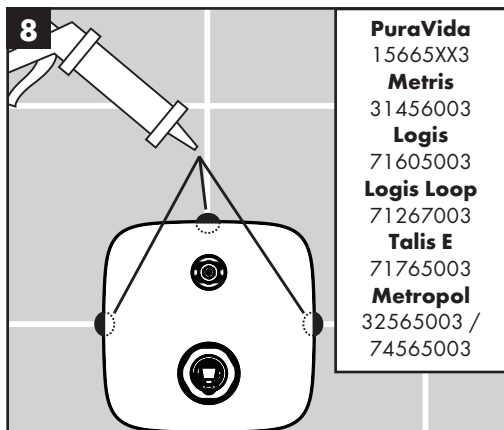
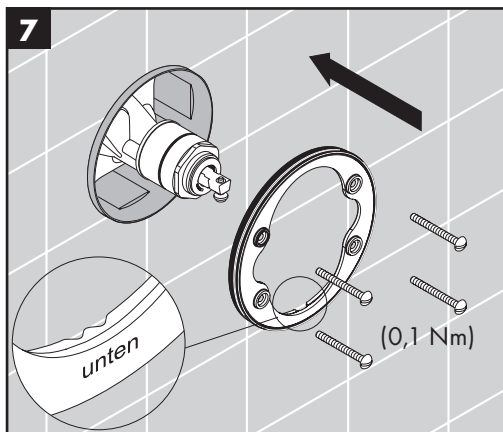
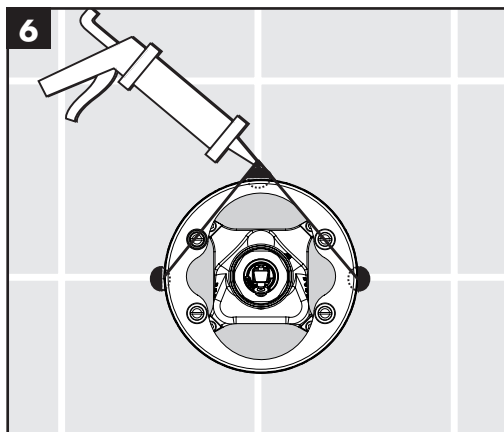
Reinigung (siehe Seite 15)



Bedienung (siehe Seite 7)

Störung	Ursache	Abhilfe
Armatur schwergängig	- Kartusche defekt, verkalkt	- Kartusche austauschen
Armatur tropft	- Kartusche defekt	- Kartusche austauschen
Zu niedrige Warmwassertemperatur, kein Kaltwasser. Durchlauferhitzer springt an, wenn Kaltwasser angewählt wird.	- Warmwasserbegrenzung falsch eingestellt - Kreuzfluss	- Warmwasserbegrenzung einstellen - Kartusche austauschen







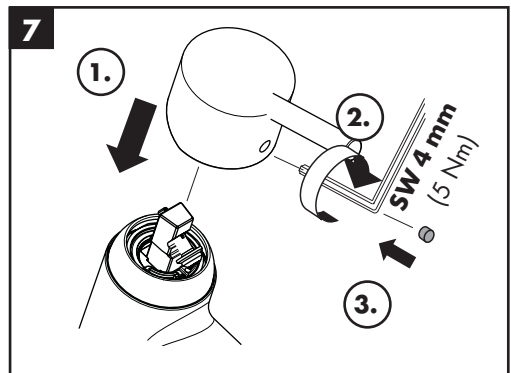
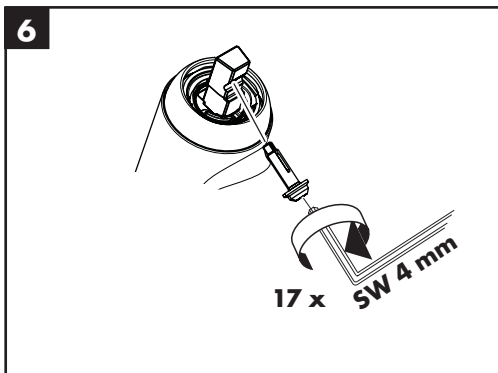
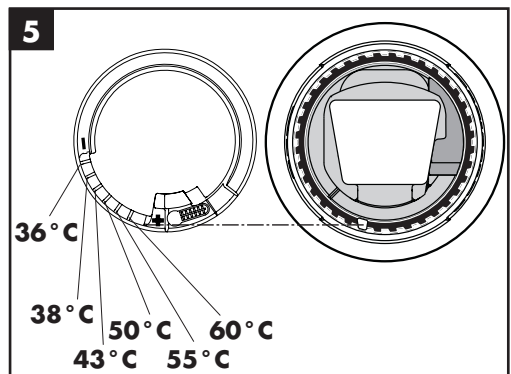
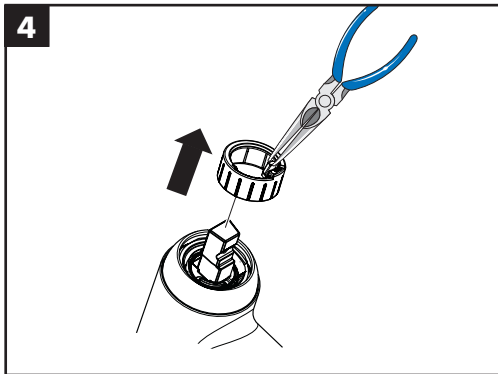
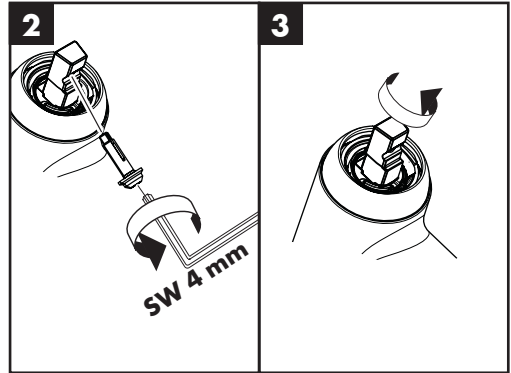
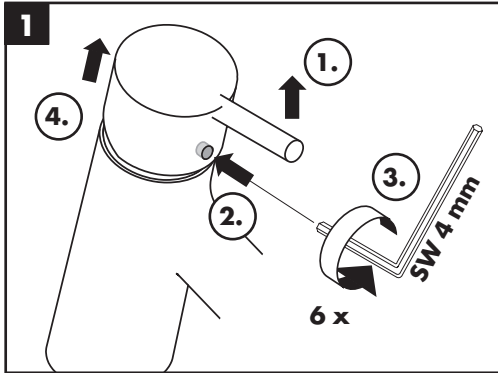
60 °C

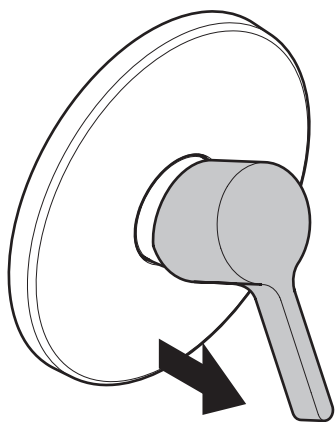


10 °C

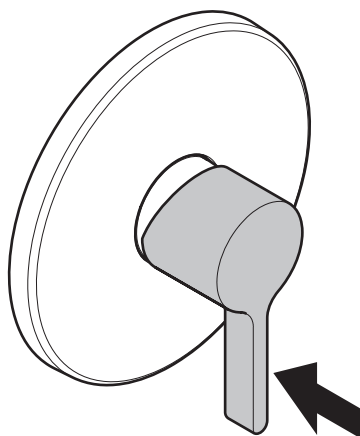


0,3 MPa

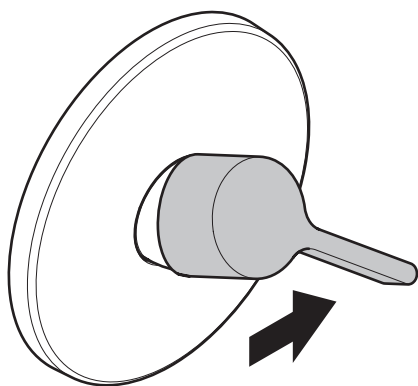




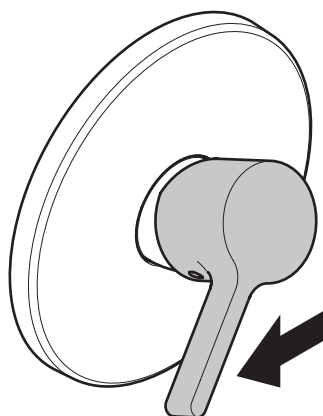
open / öffnen



close / schließen



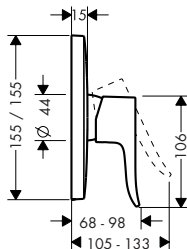
cold / kalt



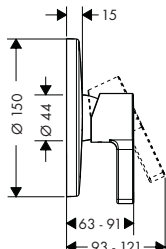
hot / warm



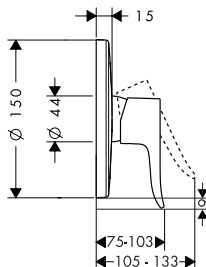
Metris
31456003



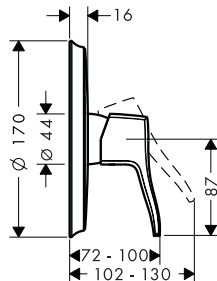
Metris S
31665XX3



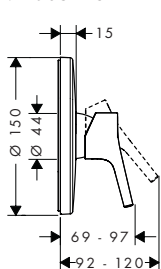
Metris
31685003



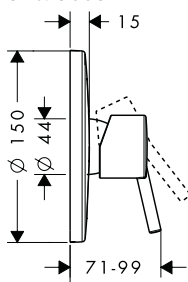
Metris Classic
31676003



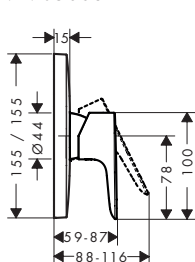
Talis S
72605XX3



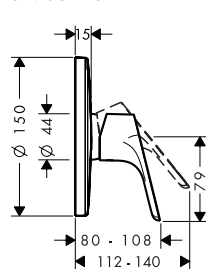
Talis S
32675003



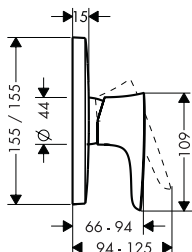
Talis E
71765003



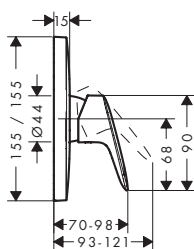
Decor
31965XX3



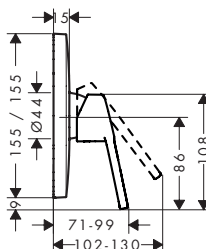
PuraVida
15665XX3



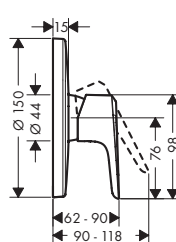
Logis
71605003



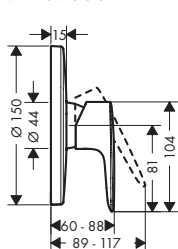
Logis Loop
71267003



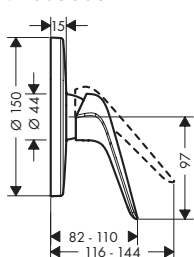
Ecos
14630000



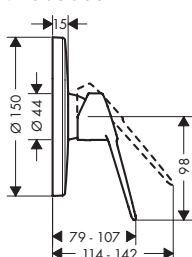
MySport
71269000



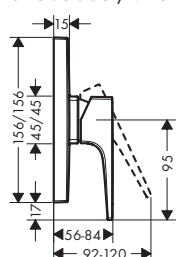
Novus
71065003

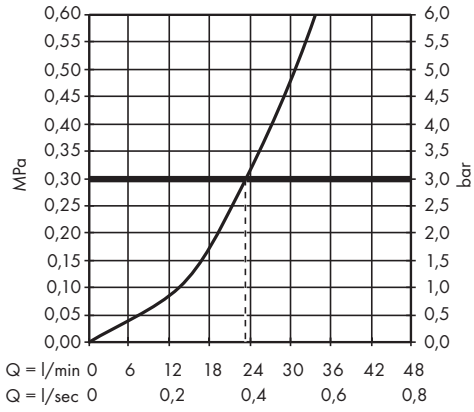


Novus Loop
71365003



Metropol
32565003 / 74565003







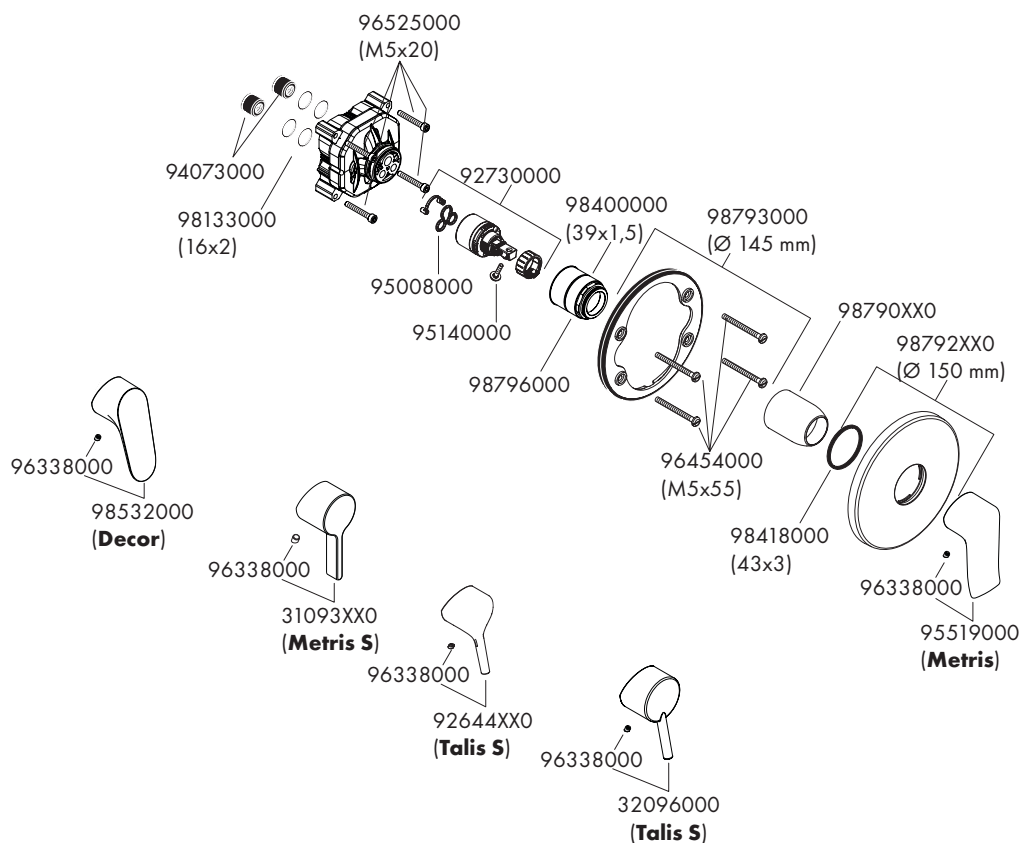
Metris S 31665XX3

Decor 31965003

Talis S 72605XX3

Talis S 32675003

Metris 31685003



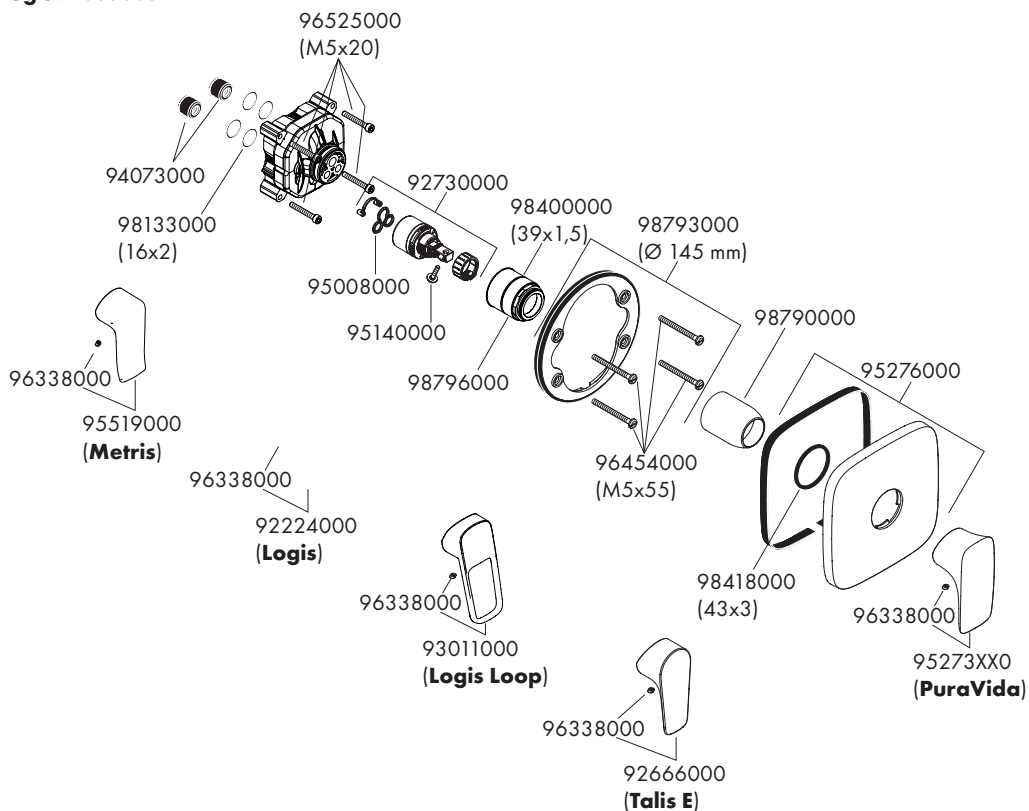
PuraVida 15665XX3

Logis Loop 71267003

Metris 31456003

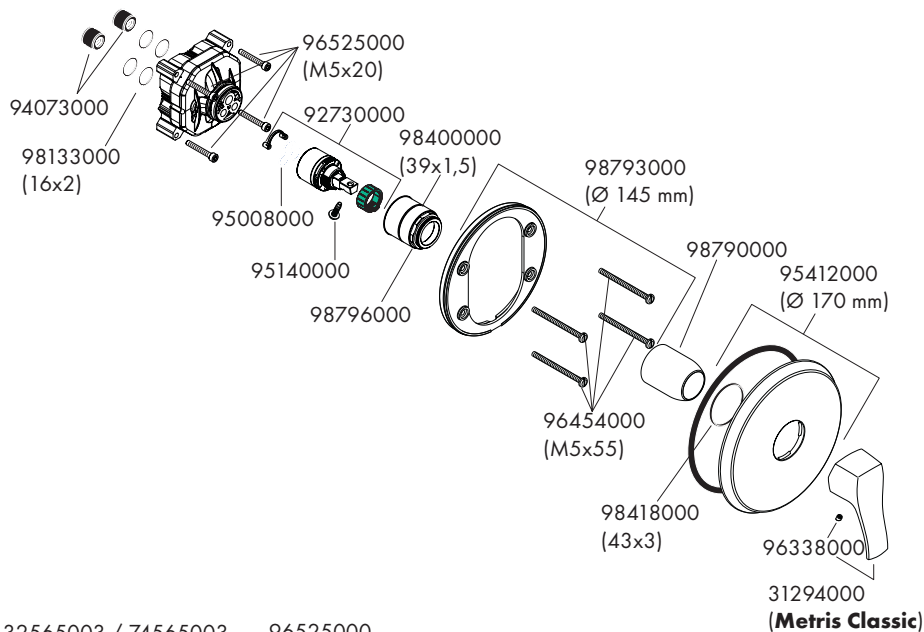
Talis E 71765003

Logis 71605003

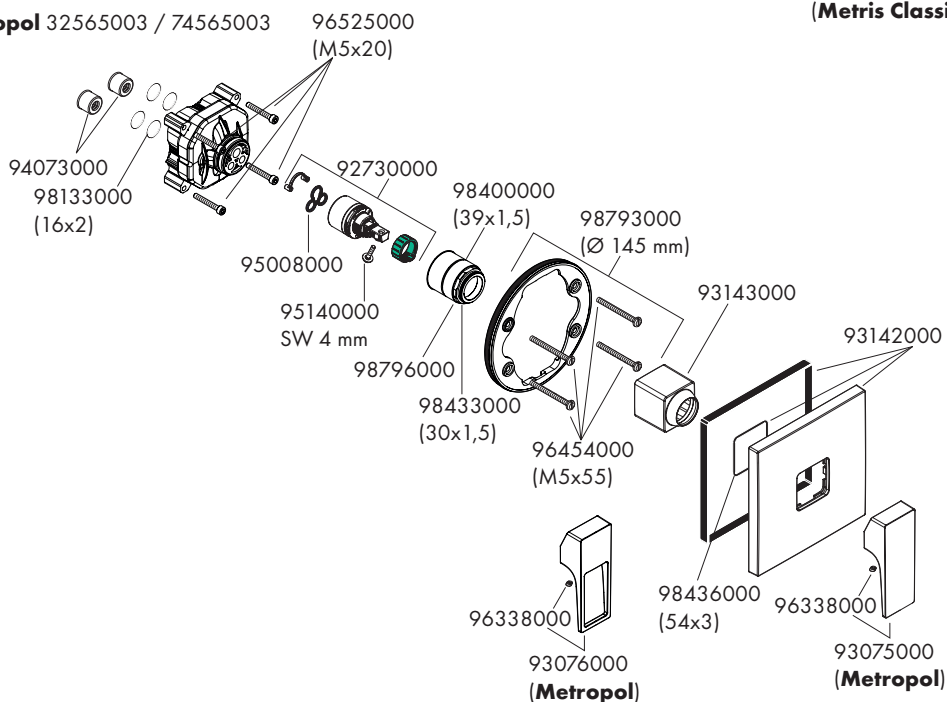




Metris Classic 31676000



Metropol 32565003 / 74565003



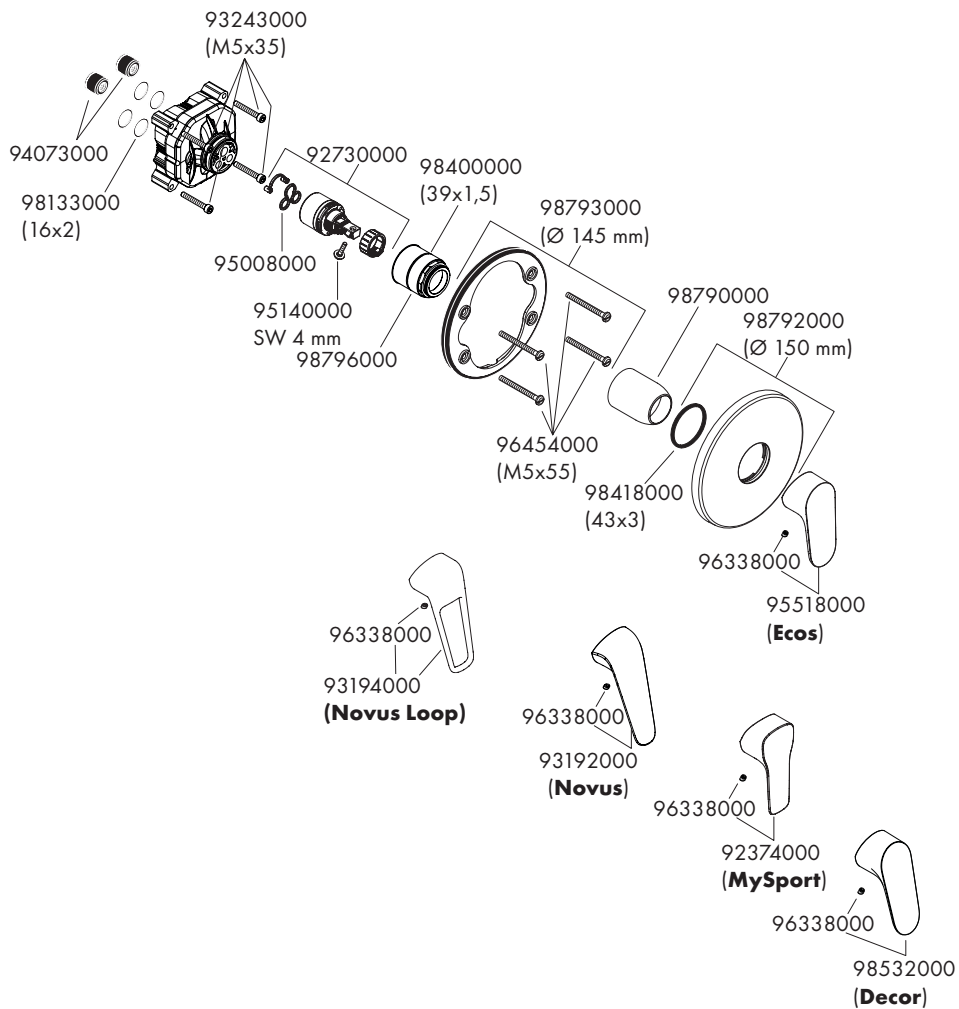
Ecos 14630000

Novus Loop 71365003

MySport 71269000

Decor 31965223

Novus 71065003

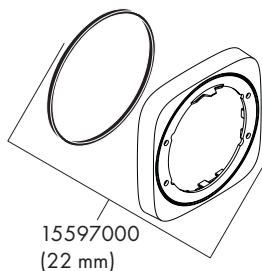
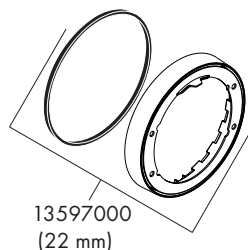




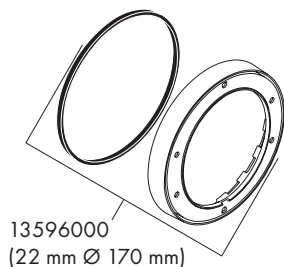
Metris S 31665XX3
Decor 31965003
Talis S 72605XX3
Talis S 32675003
Metris 31685003

Ecos 14630000
MySport 71269000
Novus 71065003
Novus Loop 71365003
Decor 31965223

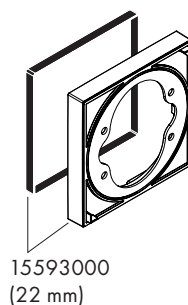
PuraVida 15665XX3
Metris 31456003
Logis 71605003
Logis Loop 71267003
Talis E 71765003



Metris Classic 31676000

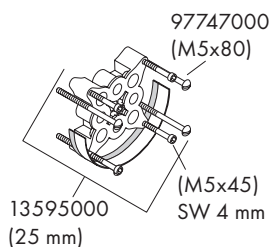


Metropol 32565003 / 74565003



Metris S 31665XX3
Decor 31965003
Talis S 72605XX3
Talis S 32675003
Metris 31685003
PuraVida 15665XX3
Metris 31456003
Logis 71605003
Logis Loop 71267003

Talis E 71765003
Metris Classic 31676000
Metropol 32565003 / 74565003
Ecos 14630000
MySport 71269000
Novus 71065003
Novus Loop 71365003
Decor 31965223



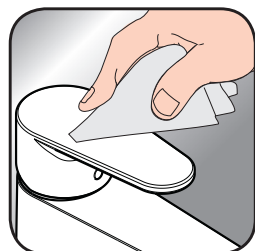


EN Cleaning recommendation / Warranty / Contact

DE Reinigungsempfehlung / Garantie / Kontakt



[www.hansgrohe.com/
cleaning-recommendation](http://www.hansgrohe.com/cleaning-recommendation)



[www.hansgrohe.com/
cleaning-recommendation](http://www.hansgrohe.com/cleaning-recommendation)



[www.hansgrohe.com/
cleaning-recommendation](http://www.hansgrohe.com/cleaning-recommendation)



[www.hansgrohe.com/
cleaning-recommendation](http://www.hansgrohe.com/cleaning-recommendation)

The logo consists of the word "hansgrohe" in a white, lowercase, sans-serif font, centered within a solid black rectangular background.

Hansgrohe · Auestraße 5 · 9 · D-77761 Schiltach · Telefon +49 (0) 78 36/51-1282 · Telefax +49 (0) 7836/51 1440
E-Mail: info@hansgrohe.com · Internet: www.hansgrohe.com

12/2019
90841835