

# Pull-out Sink Mixer

## INSTALLATION INSTRUCTIONS

### Care and Maintenance

The materials and workmanship of the tapware is of high quality and in order to maintain its appearance, it is important not to wipe with abrasive cleaners. Cleaning of this product should only be done with warm soap water on a regular basis.

### Working Specifications

Maximum : Temperature - 80°C  
Pressure - 500kpa

Where normal working pressures exceed the maximum stated above, pressure limiting valve should be installed as excessive pressure may damage the tap and void warranty.

Minimum : Temperature - 1°C  
Pressure - 150 kpa

Recommended operating pressure: 150 to 500kpa.

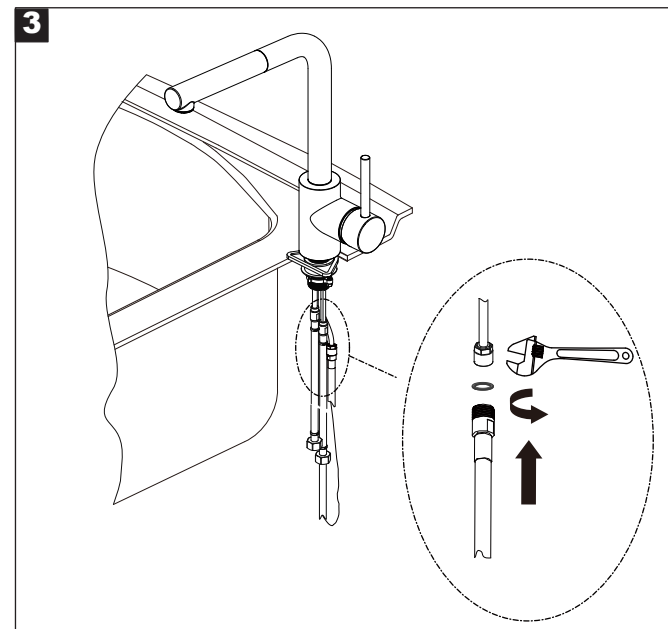
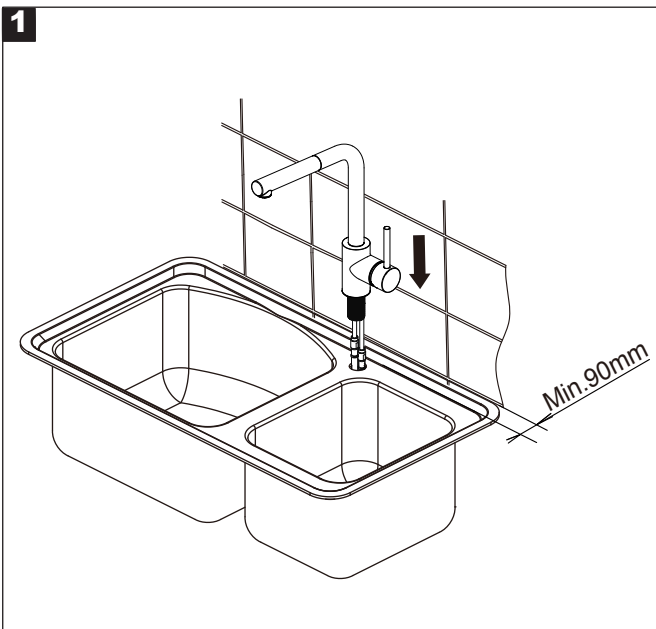
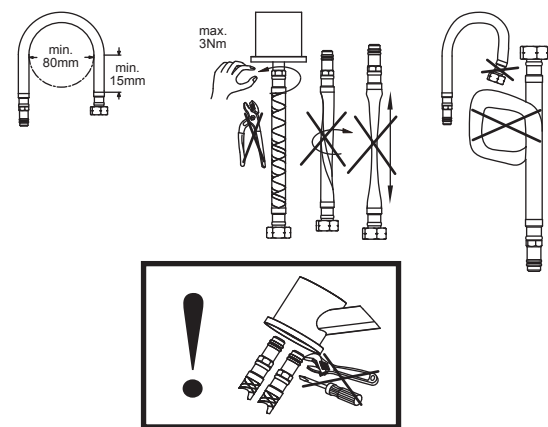
#### NOTE:

This mixer must be installed with isolating stop taps in accordance with local authority installation codes. All Abey mixers must be installed by a licensed plumber, failure to do so may void warranty. All Abey tapware must be installed in accordance with AS/NZS 3500 series.

### Notice

- 1 All pipework must be thoroughly flushed prior to installation, as foreign materials may block the flow.
- 2 Aerator insert housing must be retightened to prevent removal by hand.

#### NOTE!



- 2** No (03) mounting seat is needed if the thickness is more than 35mm.

