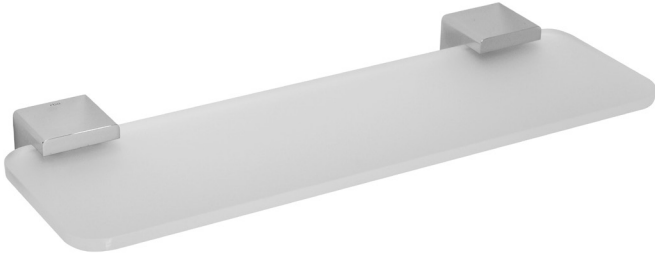


## Model RBA1622-106

### Materials & Features

Brackets are manufactured from heavy duty brass with all exposed surfaces in bright chrome. enda is a suite of attractive commercial grade accessories with radiused corners and edges to increase comfort and minimise catch.



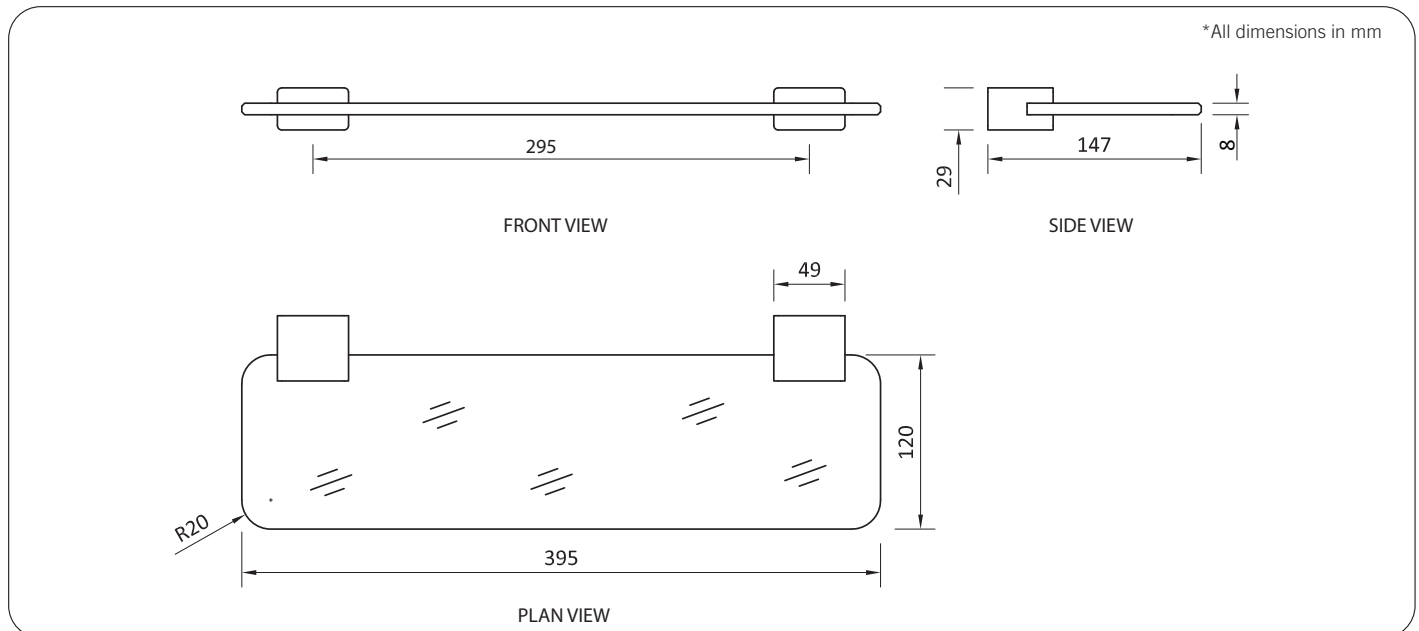
### Technical Detail

Material: Heavy Duty Brass, Bright Chrome Finish  
 Shelf: Frosted Acrylic  
 Bracket: Heavy Duty Brass Lug  
 Fixings: Included

**Available Model**  
**RBA1622-106**

enda Accessible Compliant Shelf

**Important:** Installation instructions and current rough-in details should be furnished with each fixture. Do not rough in without certified dimensions. Dimensions are subject to manufacturer's tolerance of +/-10mm.





### ënda Robe Hook #1

20mm[W] x 65mm[H] x  
21mm[D]

**RBA1622-102**



### ënda Robe Hook #3

20mm[W] x 45mm[H] x  
35mm[D]

**RBA1622-104**



### ënda Toilet Roll Holder #1

140mm[W] x 30mm[H] x  
85mm[D]

**RBA1622-107**



### ënda Toilet Roll Holder #2

130mm[W] x 81mm[H] x  
74mm[D]

**RBA1622-105**



### ënda Soap Dish

110mm[W] x 38mm[H] x  
110mm[D]

**RBA1622-101**



### ënda Acrylic Shelf to AS1428.1

395mm [W] x 29mm[H] x  
147mm[D]

**RBA1622-106**



### ënda Single Towel Rail

600mm[W] x 30mm[H] x  
70mm[D]

**RBA1622-108**



### ënda Double Towel Rail

600mm[W] x 30mm[H] x  
105mm[D]

**RBA1622-109**