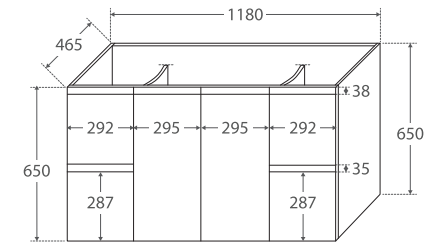


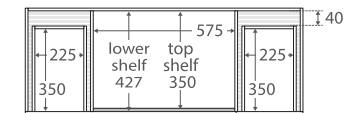
Fingerpull Satin Black 1200MM WALL-HUNG CABINET

Features

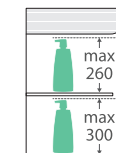
- 2pac satin black exterior (70% matte, 30% gloss)
- Black interior
- U-shape fingerpull channel
- Soft-close doors and drawers
- Full extension drawer runners
- 16 mm thick backing board and drawer bases
- FSC certified, eco-friendly E0 board



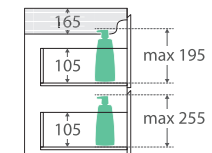
TOP VIEW: SHELF AREA & DRAWER AREA



SIDE VIEW:
SHELF STORAGE



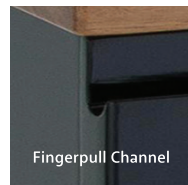
SIDE VIEW: RECESS
& DRAWER STORAGE



Available in



Satin Black
120ZB



Fingerpull Channel

Cleaning & Care

- Regularly clean with mild soapy water using a clean, soft cloth.
- Do not use harsh detergents, bleach, abrasive cleaners or cream/wax cleaners. These substances can result in scratches and/or deposit build-ups that will affect the appearance.
- Avoid placing hot objects, such as hair straighteners, on any surface as these will cause discolouration and marking.
- Spills of hair dye, after-shave lotion, nail polish and remover, aerosol spray and other harsh chemicals should be removed immediately to prevent damage and discolouration. Clean immediately with mild soapy water using a clean, soft cloth.

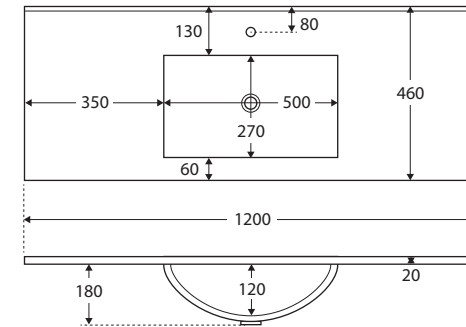
While we aim to ensure specifications are correct at the time of publication, Fienza reserves the right to make modifications without prior notice. Physical colour may vary from image shown. All measurements are shown in millimetres. Always use physical product measurements for mark-ups and roughing-in as the technical drawing may differ from actual product received.

Vanessa

POLY-MARBLE BASIN-TOP 1200MM

Features

- Rectangular bowl design
- 20 mm thick poly-marble
- Gloss warm white finish
- 3 mm tile lip
- 12 o'clock tap hole as standard (3 tap holes also available)
- Requires 32 mm non-overflow waste (available separately)



Available in



1 tap hole
120VAN



3 tap hole
120VAN-3

Cleaning & Care

- Wipe with a clean, soft cloth and mild soapy water or non-abrasive bathroom cleaner. Test in an inconspicuous area before cleaning the whole top.
- Avoid placing hot objects, such as hair straighteners, on any surface as these will cause discolouration and marking.
- Spills of hair dye, after-shave lotion, nail polish and remover, aerosol spray and other harsh chemicals should be removed immediately to prevent damage and discolouration. Clean immediately with mild soapy water using a clean, soft cloth.

While we aim to ensure specifications are correct at the time of publication, Fienza reserves the right to make modifications without prior notice. Physical colour may vary from image shown. All measurements are shown in millimetres. For ceramic products, please allow +/- 10 mm tolerance for manufacturing variance. Always use physical product measurements for mark-ups and roughing-in as the technical drawing may differ from actual product received.