

Flora Wall Basin

Vitreous China Wall Basin/Pedestal/Shroud

Basin Size: 500mm x 400mm (nominal).

Bowl Capacity: 11 litres.

A contemporary design basin incorporating deep functional bowl area with smooth contours for ease of cleaning. The basin is suitable for domestic, commercial and ♿ accessible applications (refer to Caroma Care Wall Basin section).

Tap Holes: Basin available in no taphole, one taphole (centre) and three taphole options.

Pedestal: (Optional) For Pedestal, accurate setout and use of recommended traps is essential for optimum installation. S-trap – 40mm standard Caroma plastic traps or chrome plated brass if required.

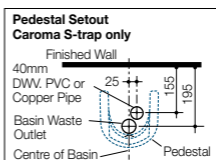
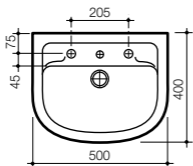
Shroud: (Optional) The Shroud completely conceals P-trap waste pipe fittings. Use **D.210 Fixing Clip** suitable only with D.200 bracket and 40mm Caroma plastic P-trap. **Note:** It is essential for the installation of the shroud to the basin that clearance is provided for the shroud in the plumbing setout from water inlet pipes and connections.

Overflow: Overflow not available.

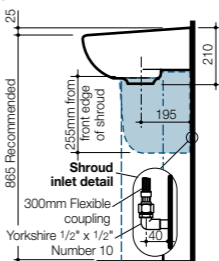
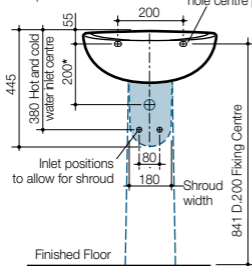
Fixing: **D.200 Basin Fixing Kit** (supplied) – bolts directly to finished wall.

Installation: Refer to *Important Information for Plumbers* section.

Colours: White only.



* 40mm Caroma Plastic P-trap outlet centre.
D.200 basin fixing kit hole centre positions



Supplied with chrome flush fitting waste and white plug.